



Toledo
Museum
of Art

2025

Annual Report

Fiscal Year 2025



Annual Report

2025

Toledo Museum of Art
2445 Monroe Street
Toledo, Ohio USA 43620
419 255 8000

toledomuseum.org

Cover:

Marisol (Escobar) (American [born France], 1930–2016), *Summer Meeting*. 1980, lithograph on ARCHES 88 paper. 30 1/4 × 22 1/2 in. (76.8 × 57.2 cm). Gift of The Buffalo AKG Art Museum and the Estate of Marisol, 2024.200

Left:

Marisol (Escobar) (American [born France], 1930–2016), *Blackbird Love*. 1980, lithograph on ARCHES 88 paper. 30 1/8 × 22 1/2 in. (76.5 × 57.2 cm). Gift of The Buffalo AKG Art Museum and the Estate of Marisol, 2024.185

Contents

04	From the Director's Desk
06	Board of Directors
08	By the Numbers
10	Financials
12	Notable Moments
16	Exhibitions
26	Savage Community Gallery
36	Artists at Work
42	Acquisition Highlights
46	Acquisitions
62	Donors

From the Director's Desk



The Toledo Museum of Art (TMA) has experienced a dynamic period of activity throughout Fiscal Year 2025, fueled by creativity and the vibrant connection we share with our community.

More than 131,733 visitors were welcomed into our galleries between July 1, 2024, and June 30, 2025. Over 50,000 more participated in our educational programs, while hundreds of thousands enjoyed our idyllic campus. We continue to connect with people in our community and beyond – online, through social media and in robust on-site programs.

Throughout the year we have delivered on our mission to integrate art into the lives of people. What we do here changes, enriches and serves our community. The sense of responsibility that comes with this power has informed every initiative this year, from the essential integration of community voices in the reinstallation of our galleries to historic exhibitions like *Ethiopia at the Crossroads*, *Rachel Ruysch: Nature into Art* and more. We have showcased diverse artistic perspectives in the Robert C. and Susan Savage Community Gallery and through our residencies for glass artists and digital artists, fostering an environment that gives creators true freedom to experiment, explore and innovate.

We have seen exciting moments of national recognition and gestures of extraordinary generosity. TMA was named Best Art Museum in the USA Today 10Best Readers' Choice Awards for 2025. Community leader and arts supporter Steve Taylor gave a \$10M gift to make parking free beginning in the 2025–2026 fiscal year. And TMA was the only museum in the world to have two of its exhibitions rated by *Apollo* magazine to be among the best five in the world.

In a major step forward for our Museum, the first full reinstallation of our galleries in more than 40 years is underway. The project will reflect the input, expertise and skill of not only the Museum's staff, but also our community and our design partners. Critical updates to physical systems will preserve the building, safeguard the artworks and ensure comfort and accessibility for all visitors. Slated for completion in 2027, the reinstallation will present our collection chronologically, revealing the myriad ways cultures have always interacted and influenced one another.

Thank you for your ongoing support. It has been an extraordinary year, and there is far more to come.

Warmest regards,

Adam Levine

Edward Drummond and Florence Scott
Libbey President, Director and CEO

Toledo Museum of Art



Art brings neighbors &
young & old &
cha & &
com Arts &
arty & art family &
ope & you music &
Todo together Toledo Museum of Art



Toledo Museum of Art
2024 Key to the Museum

Board of Directors

Mike Bauer

CEO at Libbey Inc.

Dr. Romules Durant

Superintendent of Toledo Public Schools

Pat Bowe

Chairman of the Board at The Andersons Inc.

Rodney Eason

Chief Human Resources Officer at Shumaker, Loop & Kendrick, LLP

Betsy Brady

Retired, Vice President of Finance, Administration, Human Resources, and Corporate Affairs at Plastic Technologies, Inc.

Judith Herb

Retired, Philanthropist

Brian Chambers

Board Chair and CEO at Owens Corning

Mike Hylant

Retired, Executive Chairman at Hylant Group

Sara Jane DeHoff

Retired, Attorney

Prakash Karamchandani

Co-Founder at Balance Pan-Asian Grille

Susan Denny

2025 Ambassador President

David Krock

Attorney, Eastman & Smith

Annette Donar

2025 Docent President

Rita Mansour

Certified Private Wealth Advisor, Senior Managing Director at Mansour Wealth Management

Ann McCauley

President and CEO at Trust Company Family Offices

Lisa McDuffie

President and CEO of the YWCA of Northwest Ohio

Majida Mourad

Senior Vice President, Government Relations at Tellurian Inc.

Joe Napoli

President and CEO, Toledo Mud Hens Baseball Club,
Toledo Walleye Hockey Club and Hensville

Randy Oostra

Managing Partner, Blueprint N1

Susan Palmer

Retired, Director of Development at the Toledo Museum of Art

Jay Secor

Retired, Educator, Dean and Headmaster

Dr. Dione Somerville

President of Owens Community College

Sharon Speyer

Retired, Northwest Ohio Region President at Huntington Bank

Mike Thaman

Former CEO and Chair at Owens Corning

Cynthia Thompson

Retired, Human Resources Professional

Margy Trumbull

Philanthropist, Community Volunteer and Artist

Thomas Winston

President and CEO at Toledo-Lucas County Port Authority



By the Numbers

Museum Visitors

131,733

New Acquisitions

363

Public Program

Participants

19,607

Outreach Program

Participants

13,926

Family Center Visitors

24,782

Public Glassblowing

Demonstrations Offered

290

Public Glassblowing

Demonstration Participants

9,476

Glass Art Workshop

Participants

1,580

Docent-led Tours

722

Docent-led Tour Participants

13,948

School Tours Offered

128

School Tour Participants

5,138

Adult Tours Offered

574

Adult Tour Participants

8,618

Art Classes Offered

268

Registered Art

Class Students

6,847

Studio Art Scholarships

Awarded

759

Financials

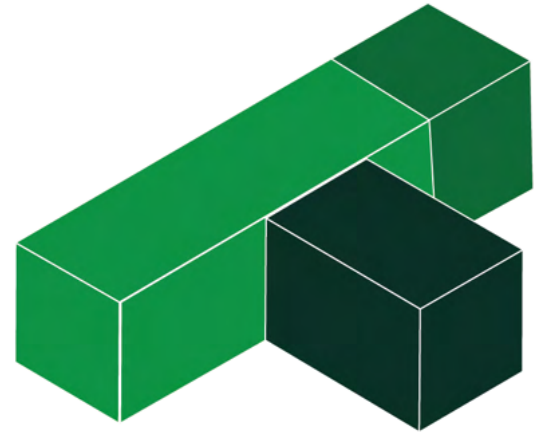
July 1, 2024–June 30, 2025

Key Data

Pooled Investments	\$280,214,770
Charitable Trusts	\$89,017,799
Total	\$369,232,569
Revenue	\$26,844,851
Expenses	\$26,771,391
Operating Surplus	\$73,460

Total Revenue and Support

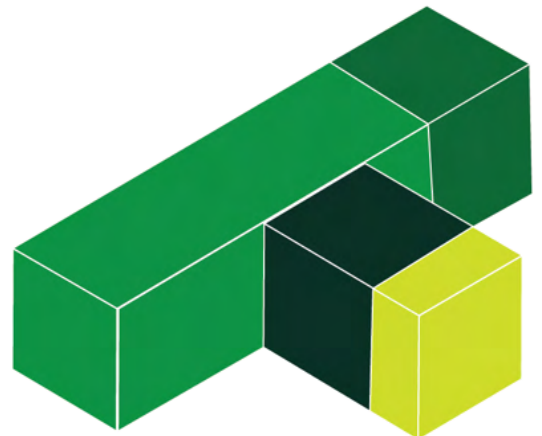
\$26,844,848



49.5%	Endowment and Investment Income	\$13,276,383
27.2%	Contributions	\$7,306,776
23.3%	Earned Income	\$6,261,689

Total Expenses

\$26,771,391



38.8%	Art Collection	\$10,392,682
29.7%	Art Education and Programs	\$7,960,569
23.0%	Management and General	\$6,149,920
8.5%	Fundraising and Development	\$2,268,220

Notable Moments

Among the year's many memorable events, the Toledo Museum of Art (TMA) was voted Best Art Museum in the USA Today 10Best Readers' Choice Awards for 2025. In another highlight of the year, TMA received a generous gift from the Taylor Automotive Family, ensuring free parking for all visitors for at least the next decade and furthering our mission to be an open

and accessible museum for the entire community. Additionally, 2025 kicked off the reinstatement of the Museum's galleries, thanks to the effort and expertise of our staff, invaluable community input, and exceptional design partners Michael Maltzan Architecture, Once-Future Office, and Studio Zewde.



TMA Named Best Art Museum in USA TODAY's 10Best Readers' Choice Awards

Among the many memorable events of 2025, the Toledo Museum of Art (TMA) was honored to be named Best Art Museum in the USA Today 10Best Readers' Choice Awards for 2025. TMA was selected by public vote as first in a field of 20 significant institutions across the nation. This distinction underscores our commitment to quality and a culture of belonging, as well as the support of our remarkable community. We are grateful to everyone who voted for TMA.





Taylor Automotive Family Gift Brings Free Parking to TMA

One of the year's most uplifting milestones came with a generous gift from the Taylor Automotive Family, ensuring free parking at the Toledo Museum of Art for at least the next 10 years. Inspired by the legacy of Julie Fisher Taylor, this extraordinary act of generosity strengthens our commitment to being an open, welcoming and

accessible museum for the entire community. With parking fees removed, visiting TMA is easier than ever. The Taylors are helping more people enjoy our galleries, the Glass Pavilion and our programs with joy and frequency. We are profoundly grateful for their vision and enduring support of TMA and the Toledo region.



TMA Kicks Off Major Reinstallation Project

This year has also seen the launch of the reinstallation of the Museum's galleries, the culmination of extraordinary effort and expertise within our staff, invaluable community input and the dedicated work of our design partners Michael Maltzan Architecture, Once-Future Office, and Studio Zewde. Guided by the insights of our community members, the new galleries will present our collection as a chronological journey through art history and around the globe, thereby representing – and connecting – creative voices across a range of cultures.





Exhibitions



Rachel Ruysch, *Flowers in a Glass Vase*



Ethiopia at the Crossroads

August 17–November 10, 2024

This fascinating exhibition explored the intersection of cultures, religions and climates that have shaped the artistic traditions of Ethiopia across nearly two millennia. More than 225 historic and contemporary works provided a unique perspective on human creativity and the dynamic role of Ethiopian artists in the exchange of artwork throughout Africa, Europe, the Middle East and beyond.

Ethiopia at the Crossroads was co-organized by the Toledo Museum of Art (TMA), Walters Art Museum, and Peabody Essex Museum and curated for TMA by Sophie Ong, Assistant Director of Strategic Initiatives.

TMA's presentation was made possible with the generous support of Presenting Sponsors Susan and Tom Palmer, Platinum Sponsors The Zenith Foundation and Cynthia and Ron Thompson, and Gold Sponsors TMA Ambassadors, with additional funding from the Ohio Arts Council, which receives support from the State of Ohio and the National Endowment for the Arts.





Strategic Interplay: African Art and Imagery in Black and White

November 9, 2024–February 23, 2025

African art and the ancient game of chess have an interwoven history that spans nearly 1500 years across the shifting nations of Africa, Europe and the Middle East. In a presentation of 64 artworks, *Strategic Interplay* explored that history, revealing a complex web of cultural innovation, competitive discord, tactical acumen and creative power.

Strategic Interplay: African Art and Imagery in Black and White was organized by the Toledo Museum of

Art and curated by Lanisa Kitchiner, Ph.D., Senior Manager of Interpretation and Curator of African Art at the Toledo Museum of Art, and Wendy Grossman, Ph.D., an independent art historian and curator.

This exhibition was made possible with the generous support of Presenting Sponsors Susan and Tom Palmer and additional funding from the Ohio Arts Council, which receives support from the State of Ohio and the National Endowment for the Arts.





Return to Turtle Island: Indigenous Nation Building in the 18th Century

March 1–August 10, 2025

Return to Turtle Island charted the centuries-long journey and homecoming of ambassadorial objects produced by First American and Canadian First Nations peoples. From the 16th through the 18th centuries, French and English colonists forged meaningful relationships with Indigenous sovereign nations, fortified through the exchange of gifts and knowledge. Indigenous objects, overwhelmingly created by women, became prized possessions, often traveling back to Europe and serving as eloquent representatives of their home cultures.

Recently acquired by the Toledo Museum of Art, the objects in this exhibition were presented as distinguished emissaries of their communities, welcomed home after centuries of service abroad.

This exhibition was made possible with the generous support of Presenting Sponsors Susan and Tom Palmer, Season Sponsors Taylor Automotive Family and the Rita Barbour Kern Foundation, Platinum Sponsor AGC of Northwest Ohio, and additional funding from the Ohio Arts Council, which receives support from the State of Ohio and the National Endowment for the Arts.





Rachel Ruysch: Nature into Art

April 12–July 27, 2025



The first monographic exhibition dedicated to the pioneering Dutch still life painter, Rachel Ruysch (1664–1750), this presentation explored the artist's fascinating life and work at a time when women's access to careers as artists was severely restricted. Tracing her artistic path through youth, apprenticeship, marriage, eleven children, and on to her extraordinary professional success, *Rachel Ruysch: Nature into Art* invited visitors to discover the complex intersections between her paintings, nature and science.

This exhibition was organized by The Toledo Museum of Art, Alte Pinakothek, Munich and the Museum of Fine Arts, Boston.


Selldorf Architects was the Toledo Museum of Art's exhibition design partner for *Rachel Ruysch: Nature into Art*.

This exhibition was made possible with the generous support of Presenting Sponsors Susan and Tom Palmer, Season Sponsors Taylor Automotive Family and the Rita Barbour Kern Foundation, Platinum Sponsors Todd and Jeannie Peters and The Zenith Foundation, Silver Sponsor TMA Ambassadors and additional funding from the Ohio Arts Council, which receives support from the State of Ohio and the National Endowment for the Arts.





A moment from the opening night of *Brenda Singletary: Reflections of Spirit* exhibition

A woman with long brown hair, wearing a blue denim jacket and a colorful beaded necklace, is seen from the back, looking at art in a gallery. The background is blurred, showing various artworks on the wall.

Robert C. and Susan Savage Community Gallery

Regional, emerging and community-based artists are the focus of exhibitions in the Robert C. and Susan Savage Community Gallery. This welcoming and flexible space creates a dialogue that amplifies diverse voices and perspectives and strengthens the bonds between TMA and local audiences. Here visitors will find art that energizes the imagination and inspires the spirit while building tangible connections with our community.

Brenda Singletary: Reflections of Spirit

July 31–October 27, 2024

In the vibrant colors, textures and abstract forms that soared across each canvas in this solo exhibition, local artist Brenda Singletary explored memories passed down through generations and an evolving identity shaped by the passage of time. Singletary's work is rooted in heritage, culture and life experiences, delving deep into her personal journeys and her family history. In each painting, *Reflections of Spirit* invited viewers to contemplate the resilience and beauty of the human spirit.







Bernadine Rais: Souvenirs

November 13, 2024–January 26, 2025

The quiet of twilight, the depth of a star-filled sky, the interplay of a streetlight's glow and the surrounding darkness – these are the singular moments captured by local artist Bernadine Rais. With its emphasis on nocturnal scenes, *Souvenirs* shared Rais's connection to images of life in the Midwest and the beauty to be found in suburban landscapes at night. Her deft brushwork and mastery of light and shadow presented viewers with an opportunity to immerse themselves in familiar surroundings turned ethereal and introspective.



The Ninth Congressional District Invitational High School Art Exhibition

February 12–March 30, 2025

The Arts Commission and Congresswoman Marcy Kaptur have partnered for over four decades to support the arts in Ohio, and through their efforts hundreds of high school students have had the opportunity to compete annually in *The Ninth Congressional District Invitational High School Art Exhibition*. Works in a wide range of media are exhibited, and young artists have won thousands of dollars in awards thanks to generous support of this show. The first-place entry is exhibited in Washington, D.C. for one year; the artwork of the two runners-up is displayed in Congresswoman Kaptur’s offices.







Chris “Chilly” Rodriguez: The Journey So Far

April 16–July 6, 2025

Drawing from a background in graffiti and street art, artist Chris “Chilly” Rodriguez creates introspective, emotional large-scale murals and mixed-media works that explore the power of art to heal, inspire and leave a lasting impact on viewers and their communities. Using aerosol paint, acrylics, oils, photography and more, the works showcased in *The Journey So Far* engaged with themes of trauma, addiction, sobriety, love and healing, charting a journey of self-expression and transformation in dynamic colors, textures and patterns.





Artists at Work



Residencies Ignite Creativity in Glass and Digital Art

Through its artist-in-residency programs, the Toledo Museum of Art fuels continuously evolving creativity and innovation, providing artists with space and resources to hone their craft, push boundaries and engage with the community. The Sara Jane DeHoff Guest Artist Pavilion Project (GAPP) gained robust momentum during Fiscal Year 2025, welcoming four artists to the SANAA Glass Pavilion's Glass Studio. Now in its second year, the Digital Artist Residence Program hosted two residencies, exploring the emerging power of digital art to connect people and communities.

GAPP Artists

Saya Woolfalk
Adam Sanzenbacher
Eduardo Portillo & María Dávila
Deborah Czeresko

Digital Artists

Jordan Buschur
Yatreda: ያጥሬዳ

Digital Artist Residencies Build Local and Global Community Bonds

The Toledo Museum of Art and TMA Labs — the museum’s incubator for digital innovation — welcomed Toledo-based artist Jordan Buschur and Ethiopian Digital Art Collective, Yatreda: ያጥሬዳ to the 2024 Digital Artist in Residence Program. With the resources of TMA at their disposal, these artists challenged the boundaries of their mediums and explored new pathways of collaboration.

Jordan Buschur’s work is rooted in the layered symbolism of everyday objects and their power to portray human presence. During her residency, Buschur partnered with fellow resident Yatreda to

expand her practice and created her first digital artwork, *Handiwork, Shadow Play*, encouraging viewers to contemplate the stories and meaning embedded in the familiar items that surround us.

Yatreda: ያጥሬዳ is a family of artists from Ethiopia, Kenya and Canada, who create digital art in the style of *tizita* — nostalgia or longing for the past. Led by Creative Director Kiya Tadele, they created *House of Yatreda*, an immersive multi-sensory and multi-spatial experience that invited the viewer to delve into Ethiopia’s rich cultural heritage through digital art and interactive experiences.





GAPP Residencies Energize Artistic Creativity, Innovation and Collaboration

The Sara Jane DeHoff Guest Artist Pavilion Project (GAPP) provides resources and a space for artists who embrace creative risk-taking and challenge the limits of glass as a medium. This year, TMA welcomed GAPP Resident Artists Saya Woolfalk, Adam Sanzenbacher, Eduardo Portillo and María Dávila, and Deborah Czeresko. Woolfalk collaborated with the glass team to produce a series of glass busts that interacted with and expanded her layered multi-media installations. Sanzenbacher explored the optical and structural properties of glass to create sculptural forms that challenged perception and storytelling. Portillo and Dávila explored the intersection of glass and textiles, examining the transparent nature of glass and its ability to reveal and alter perceptions of woven materials. Czeresko conducted a series of live glassblowing demonstrations, engaging visitors in her innovative approach to glasswork and its power to inspire dialogue around issues of gender, labor and social equity.

Saya Woolfalk

August 21–August 30, 2024

The immersive, fictional worlds created by Woolfalk are filled with vivid, complex, often spiritual narratives. Working in a broad range of media including painting, video, photography, sculpture, textiles, dance and movement, she uses fantasy and science fiction to explore the human experience as cultures mingle and hybridize.

Adam Sanzenbacher

November 1–November 10, 2024

A Toledo native and member of the xy&z artist collective, Sanzenbacher is a mixed-media artist and designer. Through the lens of materials, Sanzenbacher explores the relationships between human behavior – past, present and future – as it intersects with science and technology.

Eduardo Portillo and María Dávila

February 5–February 14, 2025

Internationally known as fiber artists, Dávila and Portillo take an experimental approach to their work, exploring the intricacies of fiber as a way of understanding other cultures. Their work revolves around the interconnectedness of their experiences, inspired by the people, cultures and landscapes that have imprinted on them.

Deborah Czeresko (Right)

April 9–April 18, 2025

Based in New York City, Czeresko's bold and thought-provoking glasswork references the traditions of Venetian glassblowing while exploring themes of identity, gender and power, continually pushing the boundaries of glass as a medium. Already an acclaimed glass artist, Czeresko gained international recognition after winning the first season of the Netflix series, *Blown Away*.



Toledo
Museum
of Art



ACQUISITION HIGHLIGHTS



Right: Martin Puryear (American, born 1941), *Bound Cone*. 1973, oak and rope. 69 1/2 x 11 x 11 in. (176.5 x 27.9 x 27.9 cm). Gift of David K. and Georgia E. Welles, 2025.14

Left: Amoako Boafo (Ghanaian, born 1984), *White Picnic Blanket*. 2021, oil on canvas. 85 1/16 x 72 7/16 in. (216.1 x 184 cm). Purchased with funds from the Libbey Endowment, Gift of Edward Drummond Libbey, 2025.17





Left: Italian, *A Crusader Icon with two martyrs of Sebaste—Eugenios and Auxentios*. About 1260–1291, tempera and oil on walnut panel. 18 7/8 x 14 3/4 x 1 3/16 in. (48 x 37.5 x 3 cm). Given in honor of Bishop Daniel E. Thomas, and Purchased with funds from the Libbey Endowment, Gift of Edward Drummond Libbey, by exchange, 2025.132

Below: F. Holland Day (American, 1864–1933), *The Seven Words*. 1898, platinum prints, black card [mount]; lacquered wood [original frame]. Individual prints: 5 1/4 x 18 in. (13.3 x 45.7 cm), frame: 8 1/2 x 34 1/2 in. (21.6 x 87.6 cm). Purchased with funds from the Libbey Endowment, Gift of Edward Drummond Libbey, by exchange, 2024.37





Marvin Lipofsky (American, 1938–2016), Otaru Series 1987–88
#18. 1987–1988, glass, twine, wire. 9 x 14 x 12 in. (22.9 x 35.6
x 30.5 cm). Gift of the Marvin Lipofsky Studio, 2024.38

Acquisitions

F. Holland Day (American, 1864–1933), *The Seven Words*. 1898, platinum prints, black card [mount]; lacquered wood [original frame]. Individual prints: 5 1/4 × 18 in. (13.3 × 45.7 cm), frame: 8 1/2 × 34 1/2 in. (21.6 × 87.6 cm). Purchased with funds from the Libbey Endowment, Gift of Edward Drummond Libbey, by exchange, 2024.37

Marvin Lipofsky (American, 1938–2016), *Otaru Series 1987–88 #18*. 1987–1988, glass, twine, wire. 9 × 14 × 12 in. (22.9 × 35.6 × 30.5 cm). Gift of the Marvin Lipofsky Studio, 2024.38

Marvin Lipofsky (American, 1938–2016), *Glass Form 1968–Y (Environment)*. 1968, glass, rayon flocking mounted on rayon flocked plywood box. 11 × 11 × 5 in. (27.9 × 27.9 × 12.7 cm). Gift of the Marvin Lipofsky Studio, 2024.39

Marvin Lipofsky (American, 1938–2016), *Small California Loop Series #5*. 1978, glass, epoxy, floatation foam, rayon flocking [white component]; glass, rayon flocking, copper plating [brown component]. 7 1/2 × 16 1/2 × 7 in. (19 × 41.9 × 17.8 cm), Gift of the Marvin Lipofsky Studio, 2024.40

Marvin Lipofsky (American, 1938–2016), *Washu China 1998 AV 10/16*. 1998, monotype with embossing and watercolor. 43 × 30 in. (109.2 × 76.2 cm). Gift of the Marvin Lipofsky Studio, 2024.41

Barbara Cerno (Acoma Pueblo, born 1951), *Mimbres style bowl with insects*. 1991, clay and polychrome slip. 3 1/4 × 9 1/2 in. (8.3 × 24.1 cm). Given in honor of Cranford Dalby, devoted collector of Pueblo Pottery, 2024.42

Barbara Cerno (Acoma Pueblo, born 1951), *Mimbres style bowl with feather motif*. 1991, clay and slip. 3 1/8 × 9 3/4 in. (7.9 × 24.8 cm). Given in honor of Cranford Dalby, devoted collector of Pueblo Pottery, 2024.43

Barbara Cerno (Acoma Pueblo, born 1951), *Mimbres style bowl with antelope*. 1991, clay and slip. 3 1/8 × 9 3/4 in. (7.9 × 24.8 cm). Given in honor of Cranford Dalby, devoted collector of Pueblo Pottery, 2024.44

Charmae Natseway (Acoma Pueblo, born 1958), *Seed pot with bird motif*. About 1990, clay and polychrome slip. 4 1/4 × 4 3/4 in. (10.8 × 12.1 cm). Given in honor of Cranford Dalby, devoted collector of Pueblo Pottery, 2024.45

Dolores Lewis (Acoma Pueblo, born 1938), *Small canteen with fish motif*. About 1990, clay and slip. 5 × 2 1/4 in. (12.7 × 5.7 cm). Given in honor of Cranford Dalby, devoted collector of Pueblo Pottery, 2024.46

Jackie Shutiva Histia (Acoma Pueblo, born 1961), *Large white seed pot*. About 1990, clay. 6 × 7 5/8 in. (15.2 × 19.4 cm). Given in honor of Cranford Dalby, devoted collector of Pueblo Pottery, 2024.47

Lillian Salvador (Acoma Pueblo, born 1944), *Seed pot with geometric and floral motifs*. 1991, clay and slip. 3 5/8 × 3 3/8 in. (9.2 × 8.6 cm). Given in honor of Cranford Dalby, devoted collector of Pueblo Pottery, 2024.48

Jennifer Estevan (Acoma Pueblo, born 1963), *Olla with Lightning Pattern*. About 1990, clay and slip. 4 13/16 × 6 3/4 in. (12.3 × 17.1 cm). Given in honor of Cranford Dalby, devoted collector of Pueblo Pottery, 2024.49

Rebecca Lucario (Acoma Pueblo, born 1951), *Wide mouth bowl*. 1991, clay and slip. 3 5/8 × 6 3/4 in. (9.2 × 17.1 cm). Given in honor of Cranford Dalby, devoted collector of Pueblo Pottery, 2024.50

Rebecca Lucario (Acoma Pueblo, born 1951), *Small seed pot with quail motif*. 1991, clay and polychrome slip. 1 3/8 × 4 1/4 in. (3.5 × 10.8 cm). Given in honor of Cranford Dalby, devoted collector of Pueblo Pottery, 2024.51

Rebecca Lucario (Acoma Pueblo, born 1951), *Small plate with Mimbres style animals*. About 1990, clay and polychrome slip. 1 × 8 in. (2.5 × 20.3 cm). Given in honor of Cranford Dalby, devoted collector of Pueblo Pottery, 2024.52

Rebecca Lucario (Acoma Pueblo, born 1951), *Large seed pot with Mimbres style lizards*. About 1990, clay and polychrome slip. 2 1/2 × 7 in. (6.4 × 17.8 cm). Given in honor of Cranford Dalby, devoted collector of Pueblo Pottery, 2024.53

Rebecca Lucario (Acoma Pueblo, born 1951), *Seed pot with fish motifs*. About 1990, clay and polychrome slip. 2 1/4 × 6 in. (5.7 × 15.2 cm). Given in honor of Cranford Dalby, devoted collector of Pueblo Pottery, 2024.54

Rebecca Lucario (Acoma Pueblo, born 1951), *Seed pot with pair of lizards*. About 1990, clay and polychrome slip. 1 7/8 × 5 1/2 in. (4.8 × 14 cm). Given in honor of Cranford Dalby, devoted collector of Pueblo Pottery, 2024.55

Rebecca Lucario (Acoma Pueblo, born 1951), *Small seed pot with animals*. About 1990, clay and polychrome slip. 1 1/2 × 4 3/4 in. (3.8 × 12.1 cm). Given in honor of Cranford Dalby, devoted collector of Pueblo Pottery, 2024.56

Rebecca Lucario (Acoma Pueblo, born 1951), *Small seed pot with lizard*. About 1990, clay and polychrome slip. 1 7/8 × 5 1/2 in. (4.8 × 14 cm). Given in honor of Cranford Dalby, devoted collector of Pueblo Pottery, 2024.57

Rebecca Lucario (Acoma Pueblo, born 1951), *Elongated seed pot with lizards*. About 1990, clay and polychrome slip. 2 5/8 × 3 1/8 in. (6.7 × 7.9 cm). Given in honor of Cranford Dalby, devoted collector of Pueblo Pottery, 2024.58

Rebecca Lucario (Acoma Pueblo, born 1951), *Large Olla*. About 1990, clay and slip. 9 3/4 × 12 in. (24.8 × 30.5 cm). Given in honor of Cranford Dalby, devoted collector of Pueblo Pottery, 2024.59

Agnes Setalla Nahsonhoya (Hopi, born 1956), *Disc shaped seed pot*. About 1990, clay and colored slip. 1 1/2 × 4 1/8 in. (3.8 × 10.5 cm). Given in honor of Cranford Dalby, devoted collector of Pueblo Pottery, 2024.60

Dianna Tahbo (Hopi, 1941–2011), *Flattened seed pot with wide mouth*. 1991, clay and polychrome slip. 2 3/4 × 6 7/8 in. (7 × 17.5 cm). Given in honor of Cranford Dalby, devoted collector of Pueblo Pottery, 2024.61

Dianna Tahbo (Hopi, 1941–2011), *Tall Vase with Wide Mouth*. 1993, clay and polychrome slip. 9 × 7 in. (22.9 × 17.8 cm). Given in honor of Cranford Dalby, devoted collector of Pueblo Pottery, 2024.62

Grace Chapella (Hopi, 1874–1980), *Large Sityaki revival pot*. About 1940s, clay and polychrome slip. 6 × 14 1/2 in. (15.2 × 36.8 cm). Given in honor of Cranford Dalby, devoted collector of Pueblo Pottery, 2024.63

Garnet Pavatea (Hopi, 1915–1981), *Large Olla*. 1972, clay and polychrome slip. 10 1/2 × 14 1/2 in. (26.7 × 36.8 cm). Given in honor of Cranford Dalby, devoted collector of Pueblo Pottery, 2024.64

Helen Naha (Hopi, 1922–1993), *Polychrome vase*. About 1990, clay and polychrome slip. 6 × 5 1/2 in. (15.2 × 14 cm). Given in honor of Cranford Dalby, devoted collector of Pueblo Pottery, 2024.65

Les Namingha (Hopi, born 1967), *Olla with flared rim*. About 1990, clay and polychrome slip. 4 3/4 × 5 in. (12.1 × 12.7 cm). Given in honor of Cranford Dalby, devoted collector of Pueblo Pottery, 2024.66

Rondina Huma (Hopi, born 1947), *Wide shouldered olla*. About 1990, clay and polychrome slip. 4 1/2 × 7 13/16 in. (11.4 × 19.9 cm). Given in honor of Cranford Dalby, devoted collector of Pueblo Pottery, 2024.67

Rondina Huma (Hopi, born 1947), *Small Olla*. About 1990, clay and polychrome slip. 2 5/8 × 4 in. (6.7 × 10.2 cm). Given in honor of Cranford Dalby, devoted collector of Pueblo Pottery, 2024.68

Rondina Huma (Hopi, born 1947), *Small spherical olla with wide mouth*. About 1990, clay and colored slip. 3 5/16 × 5 1/4 in. (8.4 × 13.3 cm). Given in honor of Cranford Dalby, devoted collector of Pueblo Pottery, 2024.69

Rondina Huma (Hopi, born 1947), *Small rounded bowl*. About 1990, clay and polychrome slip. 3 3/4 × 5 3/4 in. (9.5 × 14.6 cm). Given in honor of Cranford Dalby, devoted collector of Pueblo Pottery, 2024.70

Steve Lucas (Hopi, born 1955), *Wide shouldered olla with low neck*. 1993, clay and colored slip. 4 1/4 × 6 3/4 in. (10.8 × 17.1 cm). Given in honor of Cranford Dalby, devoted collector of Pueblo Pottery, 2024.71

Steve Lucas (Hopi, born 1955), *Low necked olla with stylized Hopi birds*. 1993, clay and colored slip. 4 5/8 × 7 in. (11.7 × 17.8 cm). Given in honor of Cranford Dalby, devoted collector of Pueblo Pottery, 2024.72

Sylvia Naha (Hopi, born 1951), *Pot with lizard and corn motifs*. About 1989–90, clay and colored slip. 4 × 5 3/4 in. (10.2 × 14.6 cm). Given in honor of Cranford Dalby, devoted collector of Pueblo Pottery, 2024.73

Sylvia Naha (Hopi, born 1951), *Seed pot with lizard motif*. About 1990, clay and colored slip. 4 1/4 × 5 3/8 in. (10.8 × 13.7 cm). Given in honor of Cranford Dalby, devoted collector of Pueblo Pottery, 2024.74

Sylvia Naha (Hopi, born 1951), *Large widemouth vase*. About 1990, clay and colored slip. 8 3/8 × 5 1/2 in. (21.3 × 14 cm). Given in honor of Cranford Dalby, devoted collector of Pueblo Pottery, 2024.75

Alice Cling (Diné/Navajo, born 1946), *Tall Neck Vase*. About 1990, clay. 6 1/8 × 5 3/4 in. (15.6 × 14.6 cm). Given in honor of Cranford Dalby, devoted collector of Pueblo Pottery, 2024.76

Anderson Peynetsa (Zuni, born 1964), *Small seed pot with lizard effigy*. About 1990, clay and slip. 3 3/8 × 3 in. (8.6 × 7.6 cm). Given in honor of Cranford Dalby, devoted collector of Pueblo Pottery, 2024.77

Anderson Peynetsa (Zuni, born 1964), *Medium red olla*. About 1990, clay and slip. 5 3/4 × 6 13/16 in. (14.6 × 17.3 cm). Given in honor of Cranford Dalby, devoted collector of Pueblo Pottery, 2024.78

Erlinda Pino (Zia, born 1961), *Large olla with bird*. About 1990, clay and polychrome slip. 8 × 9 in. (20.3 × 22.9 cm). Given in honor of Cranford Dalby, devoted collector of Pueblo Pottery, 2024.79

Joe Talachy (Pojoaque, born 1943), *Spherical jar with turtles*. About 1992, clay and polychrome slip. 6 13/16 × 9 1/4 in. (17.3 × 23.5 cm). Given in honor of Cranford Dalby, devoted collector of Pueblo Pottery, 2024.80

Alvin Curran (San Juan Pueblo, 1953–2000), *Small polychrome bowl*. About 1991, clay and polychrome slip. 2 3/4 × 4 in. (7 × 10.2 cm). Given in honor of Cranford Dalby, devoted collector of Pueblo Pottery, 2024.81

Alvin Curran (San Juan Pueblo, 1953–2000), *Medium size polychrome bowl*. About 1992, clay and polychrome slip. 4 × 5 1/8 in. (10.2 × 13 cm). Given in honor of Cranford Dalby, devoted collector of Pueblo Pottery, 2024.82

Alvin Curran (San Juan Pueblo, 1953–2000), *Small jar*. 1992, clay and polychrome slip. 5 1/4 × 5 in. (13.3 × 12.7 cm). Given in honor of Cranford Dalby, devoted collector of Pueblo Pottery, 2024.83

Alvin Curran (San Juan Pueblo, 1953–2000), *Small Bowl*. 1992, clay and polychrome slip. 3 1/4 × 6 1/2 in. (8.3 × 16.5 cm). Given in honor of Cranford Dalby, devoted collector of Pueblo Pottery, 2024.84

Angela Baca (Santa Clara Pueblo, 1927–2014), *Melon jar*. About 1990, clay. 3 1/2 × 5 1/2 in. (8.9 × 14 cm). Given in honor of Cranford Dalby, devoted collector of Pueblo Pottery, 2024.85

David Baca (Santa Clara Pueblo, born 1951), *Ribbed seed pot with elongated neck*. 1991, clay. 3 5/8 × 5 in. (9.2 × 12.7 cm). Given in honor of Cranford Dalby, devoted collector of Pueblo Pottery, 2024.86

Denny Gutierrez (Santa Clara Pueblo, 1942–2013), *Faceted Melon Jar*. 1993, clay. 5 1/4 × 5 in. (13.3 × 12.7 cm). Given in honor of Cranford Dalby, devoted collector of Pueblo Pottery, 2024.87

Dolly Naranjo (Santa Clara Pueblo, born 1947), *Smooth mouth jar*. 1990, clay. 4 3/4 × 8 3/4 in. (12.1 × 22.2 cm). Given in honor of Cranford Dalby, devoted collector of Pueblo Pottery, 2024.88

Earlene Youngbird (Santa Clara Pueblo, 1947–2008), *Large wide mouth vase*. About 1990, clay. 6 1/4 × 6 1/2 in. (15.9 × 16.5 cm). Given in honor of Cranford Dalby, devoted collector of Pueblo Pottery, 2024.89

Forrest Naranjo (Santa Clara Pueblo, born 1964), *Small jar with sgraffito bear paw*. About 1990, clay. 3 1/4 × 4 1/4 in. (8.3 × 10.8 cm). Given in honor of Cranford Dalby, devoted collector of Pueblo Pottery, 2024.90

Gracie Naranjo (Santa Clara Pueblo, 1938–2002), *Small wide mouth jar*. About 1990, clay. 3 5/8 × 5 in. (9.2 × 12.7 cm). Given in honor of Cranford Dalby, devoted collector of Pueblo Pottery, 2024.91

Harrison Begay Jr. (Diné [Navajo], born 1961), *Medium sized olla with carved bears*. 1995, clay. 6 1/4 × 7 1/2 in. (15.9 × 19.1 cm). Given in honor of Cranford Dalby, devoted collector of Pueblo Pottery, 2024.92

Jody Folwell (Santa Clara Pueblo, born 1942), *Irregular shaped spherical vessel*. About 1990, clay. 4 1/4 × 4 13/16 in. (10.8 × 12.3 cm). Given in honor of Cranford Dalby, devoted collector of Pueblo Pottery, 2024.93

Jennie Trammel (Santa Clara Pueblo, 1929–2010), *Large Vase*. About 1990, clay. 8 1/4 × 7 3/4 in. (21 × 19.7 cm). Given in honor of Cranford Dalby, devoted collector of Pueblo Pottery, 2024.94

Linda Cain (Santa Clara Pueblo, born 1949), *Large seed pot with tapered neck*. 1989, clay. 7 1/2 × 7 1/2 in. (19.1 × 19.1 cm). Given in honor of Cranford Dalby, devoted collector of Pueblo Pottery, 2024.95

Linda Tafoya Sanchez (Santa Clara Pueblo, San Juan Pueblo, born 1962), *Spherical carved seed pot*. About 1990, clay. 2 1/2 × 2 11/16 in. (6.4 × 6.8 cm). Given in honor of Cranford Dalby, devoted collector of Pueblo Pottery, 2024.96

Linda Tafoya Sanchez (Santa Clara Pueblo, San Juan Pueblo, born 1962), *Small carved bowl with Avanyu pattern*. About 1990, clay. 6 1/2 × 7 1/2 in. (16.5 × 19.1 cm). Given in honor of Cranford Dalby, devoted collector of Pueblo Pottery, 2024.97

Linda Tafoya Sanchez (Santa Clara Pueblo, San Juan Pueblo, born 1962), *Swirl-carved seed jar*. About 1990, clay. 4 1/8 × 4 3/4 in. (10.5 × 12.1 cm). Given in honor of Cranford Dalby, devoted collector of Pueblo Pottery, 2024.98

Lela Gutierrez (Santa Clara Pueblo, 1895–1966) and Luther Gutierrez (Santa Clara Pueblo, 1911–1987), *Large vase with long neck*. About 1950–1966, clay and polychrome slip. 9 3/4 × 7 in. (24.8 × 17.8 cm). Given in honor of Cranford Dalby, devoted collector of Pueblo Pottery, 2024.99

Lela Gutierrez (Santa Clara Pueblo, 1895–1966) and Luther Gutierrez (Santa Clara Pueblo, 1911–1987), *Small bowl*. About 1950–1966, clay and polychrome slip. 2 1/4 × 4 3/8 in. (5.7 × 11.1 cm). Given in honor of Cranford Dalby, devoted collector of Pueblo Pottery, 2024.100

Margaret Gutierrez (Santa Clara Pueblo, 1936–2018), *Small hexagon-shaped bowl*. About 1990, clay and polychrome slip. 3 1/4 × 4 7/8 in. (8.3 × 12.4 cm). Given in honor of Cranford Dalby, devoted collector of Pueblo Pottery, 2024.101

Margaret Tafoya (Santa Clara Pueblo, 1904–2001), *Large Jar*. 1971, clay. 13 × 11 in. (33 × 27.9 cm). Given in honor of Cranford Dalby, devoted collector of Pueblo Pottery, 2024.102

Roxanne Swentzell (Santa Clara Pueblo, born 1962), *Oh My*. Late 20th–early 21st century, bronze. 11 3/4 × 9 × 11 in. (29.8 × 22.9 × 27.9 cm). Given in honor of Cranford Dalby, devoted collector of Pueblo Pottery, 2024.103

Preston Singletary (Tlingit, born 1963), *White Hat*. 1998, glass. 7 1/2 × 18 3/4 in. (19.1 × 47.6 cm). Given in honor of Cranford Dalby, devoted collector of Pueblo Pottery, 2024.104

Lola Cody (Diné/Navajo), *“Storm Pattern” Textile*. Late 20th century, sheep’s wool and natural dyes. 24 3/4 × 19 in. (62.9 × 48.3 cm). Given in honor of Cranford Dalby, devoted collector of Pueblo Pottery, 2024.105

Diné (Navajo), *“Two Grey Hills” Textile*. Late 20th century, sheep’s wool and natural dyes. 53 × 31 1/4 in. (134.6 × 79.4 cm). Given in honor of Cranford Dalby, devoted collector of Pueblo Pottery, 2024.106

Nina Yazzie (Diné/Navajo), *“Revival Style” Textile in red and blue*. Late 20th century, sheep’s wool, natural and commercial dyes. 57 × 57 in. (144.8 × 144.8 cm). Given in honor of Cranford Dalby, devoted collector of Pueblo Pottery, 2024.107

Diné (Navajo), *“Two Grey Hills” Textile*. Late 20th century, sheep’s wool and natural dyes. 18 1/2 × 13 in. (47 × 33 cm). Given in honor of Cranford Dalby, devoted collector of Pueblo Pottery, 2024.108

Adrienne Roy Keene (Acoma Pueblo, born 1956), *Small jar with long neck*. About 1992, clay and slip. 4 3/4 × 4 3/8 in. (12.1 × 11.1 cm). Purchased with funds from the Florence Scott Libbey Bequest in Memory of her Father, Maurice A. Scott, 2024.109

Adrienne Roy Keene (Acoma Pueblo, born 1956), *Small seed pot with flattened top*. About 1992, clay and slip. 4 1/8 × 5 in. (10.5 × 12.7 cm). Purchased with funds from the Florence Scott Libbey Bequest in Memory of her Father, Maurice A. Scott, 2024.110

Adrienne Roy Keene (Acoma Pueblo, born 1956), *Small jar with elongated neck*. About 1992, clay and slip. 3 3/8 × 3 1/4 in. (8.6 × 8.3 cm). Purchased with funds from the Florence Scott Libbey Bequest in Memory of her Father, Maurice A. Scott, 2024.111

Barbara Cerno (Acoma Pueblo, born 1951) and Joseph Cerno (Acoma Pueblo, born 1947), *Small polychrome olla*. About 1992, clay and polychrome slip. 5 1/8 × 6 7/8 in. (13 × 17.5 cm). Purchased with funds from the Florence Scott Libbey Bequest in Memory of her Father, Maurice A. Scott, 2024.112

Barbara Cerno (Acoma Pueblo, born 1951) and Joseph Cerno (Acoma Pueblo, born 1947), *Large olla with double shoulder and scalloped rim*. 1991, clay and polychrome slip. 11 × 10 1/4 in. (27.9 × 26 cm). Purchased with funds from the Florence Scott Libbey Bequest in Memory of her Father, Maurice A. Scott, 2024.113

Barbara Cerno (Acoma Pueblo, born 1951) and Joseph Cerno (Acoma Pueblo, born 1947), *Large polychrome olla*. 1991, clay and polychrome slip. 9 × 10 in. (22.9 × 25.4 cm). Purchased with funds from the Florence Scott Libbey Bequest in Memory of her Father, Maurice A. Scott, 2024.114

Dorothy Torivio (Acoma Pueblo, 1946–2011), *Medium size flattened seed pot*. About 1990, clay and polychrome slip. 2 1/2 × 5 1/4 in. (6.4 × 13.3 cm). Purchased with funds from the Florence Scott Libbey Bequest in Memory of her Father, Maurice A. Scott, 2024.115

Dorothy Torivio (Acoma Pueblo, 1946–2011), *Flattened seed pot with raised lip*. About 1990, clay and slip. 2 3/8 × 4 3/8 in. (6 × 11.1 cm). Purchased with funds from the Florence Scott Libbey Bequest in Memory of her Father, Maurice A. Scott, 2024.116

Dorothy Torivio (Acoma Pueblo, 1946–2011), *Flattened seed pot*. About 1990, clay and slip. 3 7/8 × 6 3/4 in. (9.8 × 17.1 cm). Purchased with funds from the Florence Scott Libbey Bequest in Memory of her Father, Maurice A. Scott, 2024.117

Dorothy Torivio (Acoma Pueblo, 1946–2011), *Flattened seed pot with floral motifs*. About 1991, clay and slip. 2 1/4 × 5 in. (5.7 × 12.7 cm). Purchased with funds from the Florence Scott Libbey Bequest in Memory of her Father, Maurice A. Scott, 2024.118

Dextra Quotskuyva Nampeyo (Hopi, 1928–2019), *Tall necked olla*. About 1990, clay and polychrome slip. 3 3/4 × 5 in. (9.5 × 12.7 cm). Purchased with funds from the Florence Scott Libbey Bequest in Memory of her Father, Maurice A. Scott, 2024.119

Dextra Quotskuyva Nampeyo (Hopi, 1928–2019), *Wide shouldered seed pot*. About 1990, clay and polychrome slip. 3 3/8 × 4 3/4 in. (8.6 × 12.1 cm). Purchased with funds from the Florence Scott Libbey Bequest in Memory of her Father, Maurice A. Scott, 2024.120

Dextra Quotskuyva Nampeyo (Hopi, 1928–2019), *Sikyatki-style vessel*. About 1990, clay and polychrome slip. 3 1/4 × 2 3/8 in. (8.3 × 6 cm). Purchased with funds from the Florence Scott Libbey Bequest in Memory of her Father, Maurice A. Scott, 2024.121

Dextra Quotskuyva Nampeyo (Hopi, 1928–2019), *Seed pot*. About 1990, clay and polychrome slip. 2 3/8 × 3 3/4 in. (6 × 9.5 cm). Purchased with funds from the Florence Scott Libbey Bequest in Memory of her Father, Maurice A. Scott, 2024.122

Karen Abeita (Hopi, born 1960), *Large Sikyatki-shaped jar*. About 1990, clay and polychrome slip. 8 1/2 × 15 1/2 in. (21.6 × 39.4 cm). Purchased with funds from the Florence Scott Libbey Bequest in Memory of her Father, Maurice A. Scott, 2024.123

Les Namingha (Hopi, born 1967), *Small long necked jar*. 1993, clay and polychrome slip. 3 3/4 × 3 3/4 in. (9.5 × 9.5 cm). Purchased with funds from the Florence Scott Libbey Bequest in Memory of her Father, Maurice A. Scott, 2024.124

Les Namingha (Hopi, born 1967), *Polychrome spherical olla*. About 2000, clay and polychrome slip. 6 1/2 × 9 1/2 in. (16.5 × 24.1 cm). Purchased with funds from the Florence Scott Libbey Bequest in Memory of her Father, Maurice A. Scott, 2024.125

Les Namingha (Hopi, born 1967), *Shallow dough bowl*. 1993, clay and polychrome slip. 2 3/4 × 7 3/4 in. (7 × 19.7 cm). Purchased with funds from the Florence Scott Libbey Bequest in Memory of her Father, Maurice A. Scott, 2024.126

Rondina Huma (Hopi, born 1947), *Medium olla with wide mouth*. About 1990, clay and polychrome slip. 6 3/4 × 7 1/4 in. (17.1 × 18.4 cm). Purchased with funds from the Florence Scott Libbey Bequest in Memory of her Father, Maurice A. Scott, 2024.127

Christine Nofchissey McHorse (Diné/Navajo, 1948–2021), *Widemouth Bowl*. About 1990, micaceous clay. 4 1/2 × 6 in. (11.4 × 15.2 cm). Purchased with funds from the Florence Scott Libbey Bequest in Memory of her Father, Maurice A. Scott, 2024.128

Christine Nofchissey McHorse (Diné/Navajo, 1948–2021), *Large Platter*. About 1990, micaceous clay. 1 3/4 × 16 in. (4.4 × 40.6 cm). Purchased with funds from the Florence Scott Libbey Bequest in Memory of her Father, Maurice A. Scott, 2024.129

Christine Nofchissey McHorse (Diné/Navajo, 1948–2021), *Handled pot with horned toad effigy lid*. About 1993, micaceous clay. 8 1/8 × 8 1/4 in. (20.6 × 21 cm). Purchased with funds from the Florence Scott Libbey Bequest in Memory of her Father, Maurice A. Scott, 2024.130

Christine Nofchissey McHorse (Diné/Navajo, 1948–2021), *Large Olla*. About 1990, micaceous clay. 11 3/4 × 14 1/2 in. (29.8 × 36.8 cm). Purchased with funds from the Florence Scott Libbey Bequest in Memory of her Father, Maurice A. Scott, 2024.131

Adam Martinez (San Ildefonso Pueblo, 1904–2000), *Spherical Black Jar*. About 1990, clay. 3 1/4 × 5 1/8 in. (8.3 × 13 cm). Purchased with funds from the Florence Scott Libbey Bequest in Memory of her Father, Maurice A. Scott, 2024.132

Adam Martinez (San Ildefonso Pueblo, 1904–2000), *Small black saucer*. 20th century, clay. 7/8 × 5 5/8 in. (2.2 × 14.3 cm). Purchased with funds from the Florence Scott Libbey Bequest in Memory of her Father, Maurice A. Scott, 2024.133

Dora Tse-Pe (Pena) (San Ildefonso, 1939–2022), *Spherical jar with turquoise inlay*. About 1990, clay. 4 7/8 × 4 3/4 in. (12.4 × 12.1 cm). Purchased with funds from the Florence Scott Libbey Bequest in Memory of her Father, Maurice A. Scott, 2024.134

Maria Martinez (San Ildefonso Pueblo, 1887–1980) and Julian Martinez (San Ildefonso Pueblo, 1879–1943), *Small wide mouth vase*. About 1925–1943, clay. 3 1/4 × 5 in. (8.3 × 12.7 cm). Purchased with funds from the Florence Scott Libbey Bequest in Memory of her Father, Maurice A. Scott, 2024.135

Maria Martinez (San Ildefonso Pueblo, 1887–1980) and Julian Martinez (San Ildefonso Pueblo, 1879–1943), *Small vase*. About 1925–1943, clay. 2 5/8 × 4 1/4 in. (6.7 × 10.8 cm). Purchased with funds from the Florence Scott Libbey Bequest in Memory of her Father, Maurice A. Scott, 2024.136

Maria Martinez (San Ildefonso Pueblo, 1887–1980) and Julian Martinez (San Ildefonso Pueblo, 1879–1943), *Large Jar*. About 1925–1943, clay. 10 × 9 in. (25.4 × 22.9 cm). Purchased with funds from the Florence Scott Libbey Bequest in Memory of her Father, Maurice A. Scott, 2024.137

Maria Martinez (San Ildefonso Pueblo, 1887–1980) and Popovi Da (San Ildefonso Pueblo, 1923–1971), *Platter with feather pattern*. About 1956–1971, clay. 11 1/8 × 6 1/2 in. (2.9 × 16.5 cm). Purchased with funds from the Florence Scott Libbey Bequest in Memory of her Father, Maurice A. Scott, 2024.138

Maria Martinez (San Ildefonso Pueblo, 1887–1980) and Santana Roybal Martinez (San Ildefonso Pueblo, 1909–2002), *Small black bowl*. Mid to late 1940s, clay. 2 3/4 × 4 1/2 in. (7 × 11.4 cm). Purchased with funds from the Florence Scott Libbey Bequest in Memory of her Father, Maurice A. Scott, 2024.139

Maria Martinez (San Ildefonso Pueblo, 1887–1980) and Santana Roybal Martinez (San Ildefonso Pueblo, 1909–2002), *Small black saucer*. Mid to late 1940s, clay. 1 1/16 × 5 5/8 in. (2.7 × 14.3 cm). Purchased with funds from the Florence Scott Libbey Bequest in Memory of her Father, Maurice A. Scott, 2024.140

Maria Martinez (San Ildefonso Pueblo, 1887–1980), *Large Olla*. About 1950s, clay. 7 3/4 × 9 in. (19.7 × 22.9 cm). Purchased with funds from the Florence Scott Libbey Bequest in Memory of her Father, Maurice A. Scott, 2024.141

Margaret Tafoya (Santa Clara Pueblo, 1904–2001), *Small carved jar*. About 1990, clay. 5 1/8 x 6 in. (13 x 15.2 cm). Purchased with funds from the Florence Scott Libbey Bequest in Memory of her Father, Maurice A. Scott, 2024.142

Margaret Tafoya (Santa Clara Pueblo, 1904–2001), *Small round jar*. About 1990, clay. 4 x 6 1/4 in. (10.2 x 15.9 cm). Purchased with funds from the Florence Scott Libbey Bequest in Memory of her Father, Maurice A. Scott, 2024.143

Margaret Tafoya (Santa Clara Pueblo, 1904–2001), *Polished black jar*. About 1990, clay. 4 x 7 in. (10.2 x 17.8 cm). Purchased with funds from the Florence Scott Libbey Bequest in Memory of her Father, Maurice A. Scott, 2024.144

Tina Garcia (Santa Clara Pueblo, 1957–2005), *Large Seed Pot with Bear Paw Impression*. About 1990, clay. 4 3/4 x 7 1/8 in. (12.1 x 18.1 cm). Purchased with funds from the Florence Scott Libbey Bequest in Memory of her Father, Maurice A. Scott, 2024.145

Tammy Garcia (Pueblo, born 1969), *Spherical seed pot with elongated neck*. 1993, clay. 6 x 7 1/2 in. (15.2 x 19.1 cm). Purchased with funds from the Florence Scott Libbey Bequest in Memory of her Father, Maurice A. Scott, 2024.146

Tina Garcia (Santa Clara Pueblo, 1957–2005), *Double shoulder jar with long neck*. About 1990, clay. 7 3/16 x 6 1/4 in. (18.3 x 15.9 cm). Purchased with funds from the Florence Scott Libbey Bequest in Memory of her Father, Maurice A. Scott, 2024.147

Tammy Garcia (Pueblo, born 1969), *Large jar with pronounced shoulder*. About 1990, clay. 5 1/4 x 7 in. (13.3 x 17.8 cm). Purchased with funds from the Florence Scott Libbey Bequest in Memory of her Father, Maurice A. Scott, 2024.148

Tammy Garcia (Pueblo, born 1969), *Large jar with flared rim*. About 1990, clay. 9 1/8 x 8 1/4 in. (23.2 x 21 cm). Purchased with funds from the Florence Scott Libbey Bequest in Memory of her Father, Maurice A. Scott, 2024.149

Tammy Garcia (Pueblo, born 1969), *Large Olla with Flared Mouth*. 1993, clay. 11 x 12 in. (27.9 x 30.5 cm). Purchased with funds from the Florence Scott Libbey Bequest in Memory of her Father, Maurice A. Scott, 2024.150

Roxanne Swentzell (Santa Clara Pueblo, born 1962), *Eve*. 20th century, bronze. 13 1/2 x 10 x 15 in. (34.3 x 25.4 x 38.1 cm). Partial gift in honor of Cranford Dalby, devoted collector of Pueblo pottery, and partial purchase with funds from the Florence Scott Libbey Bequest in Memory of her Father, Maurice A. Scott, 2024.151

Preston Singletary (Tlingit, born 1963), *Blue Hat*. 1998, glass. 6 1/2 x 17 in. (16.5 x 43.2 cm). Purchased with funds from the Florence Scott Libbey Bequest in Memory of her Father, Maurice A. Scott, 2024.152

A. Begay (Diné/Navajo), *Textile in Storm Pattern*. Late 20th century, sheep's wool and natural dyes. 36 1/2 x 24 in. (92.7 x 61 cm). Purchased with funds from the Florence Scott Libbey Bequest in Memory of her Father, Maurice A. Scott, 2024.153

M. Lewis (Diné/Navajo), *Textile in Chief's Blanket Revival Style*. Late 20th century, sheep's wool, natural and commercial dyes. 49 x 33 in. (124.5 x 83.8 cm). Purchased with funds from the Florence Scott Libbey Bequest in Memory of her Father, Maurice A. Scott, 2024.154

Max Kuehne (American, 1880–1968), *Screen*. About 1930, incised gessoed wood, tempera, silver leaf, shellac. 72 x 60 x 12 in. (182.9 x 152.4 x 30.5 cm). Purchased with funds given by Georgia Welles Apollo Society members Jeffery and Inge Klopping, Jean and Ken Lovejoy, Doug and Kim Kearns, Margy Trumbull, and Louise and Porter Gregory, 2024.155

Below: Gimhongsok (South Korean, born 1964), *Donkey's Sofa*. 2019, resin, fabric, running shoes, wood, foam rubber, text panel. Donkey: 24 x 89 x 32 in. (61 x 226.1 x 81.3 cm), Sofa: 25 1/2 x 85 x 39 in. (64.8 x 215.9 x 99.1 cm), Text Panel: 21 5/8 x 15 3/4 x 81 1/8 in. (55 x 40 x 206 cm). Purchased with funds from the Libbey Endowment, Gift of Edward Drummond Libbey, 2024.156A–B



Stephanie Syjuco (American, born 1947), *Cargo Cults (Java Bunny)*. 2018, archival pigment print. 20 x 15 in. (50.8 x 38.1 cm). Mrs. George W. Stevens Fund, 2024.157

Stephanie Syjuco (American, born 1947), *Cargo Cults (Head Bundle)*. 2018, archival pigment print. 20 x 15 in. (50.8 x 38.1 cm). Mrs. George W. Stevens Fund, 2024.158

Stephanie Syjuco (American, born 1947), *Block Out The Sun*. 2021, single-channel video with sound. 05:09 minutes. Purchased with funds from the Libbey Endowment, Gift of Edward Drummond Libbey, 2024.159

George Morrison (Ojibwe, American, 1919–2000), *Untitled*. 1954, ink on paper. 12 x 24 in. (30.5 x 61 cm). Mrs. George W. Stevens Fund, 2024.160

Teresita Fernández (American, born 1968), *Fire (America) 4*. 2017, glazed ceramic. 72 x 144 x 1 1/4 in. (182.9 x 365.8 x 3.2 cm). Mr. and Mrs. Robert J. Barber Art Fund, 2024.161A–C

Howard Hodgkin (British, 1932–2017), *Two to Go*. 1981–1982, lithograph. 35.8 x 48 in. (91 x 122 cm). Given in memory of Clarence and Dorothy Wyman, 2024.162

Maruyama Okyo (Japanese, 1733–1795), *Crane and Pine Tree*. 1766, color on silk. 39 15/16 x 12 13/16 in. (101.5 x 32.5 cm), Mount: 74 13/16 x 16 15/16 in. (190 x 43 cm). Frederick B. and Kate L. Shoemaker Fund, 2024.163

Maruyama Okyo (Japanese, 1733–1795), *Peonies with Rock*. 1765, color on silk. 39 1/2 x 13 in. (100.3 x 33 cm), Mount: 72 5/8 x 17 1/2 in. (184.5 x 44.5 cm). Mrs. George W. Stevens Fund, 2024.164

Right: Tanaka Yū (Japanese, born 1989), *Tsutsumimono (Bundle)*. 2021, glazed stoneware. 17 3/4 x 16 1/8 x 14 1/8 in. (45.1 x 41 x 35.9 cm). Anonymous donation in honor of Roger Berkowitz, Former Director of the Toledo Museum of Art, 2024.165

Deborah Aguado (American, born 1939), *Rangefinder*. 1981, Sterling silver, natural agate, and smoky quartz with etching. 3 9/16 x 2 15/16 x 7/8 in. (9 x 7.5 x 2.2 cm). Gift of Dorothy R. and George B. Saxe, 2024.166

Mary Lee Hu (American, born 1943), *Untitled (Bracelet)*. Possibly 2002, 18K twined gold. 13/8 x 4 7/16 x 3 in. (3.5 x 11.3 x 7.6 cm). Gift of Dorothy R. and George B. Saxe, 2024.167

Seljuk, *Mother and Child*. 11th–12th century, stucco. 12 5/8 x 10 5/8 x 5 3/8 in. (32 x 27 x 13.7 cm). Purchased with funds from the Libbey Endowment, Gift of Edward Drummond Libbey, 2024.168

Dox Thrash (American, 1893–1965), *A New Day*. About 1942–1944, carborundum mezzotint. 10 1/8 x 8 1/8 in. (25.7 x 20.6 cm). Partial purchase using funds from the William J. Hitchcock Fund in memory of Grace J. Hitchcock, and partial gift of Stephen Dull, 2024.169

John Stuart Curry (American, 1897–1946), *John Brown*. 1939, lithograph on wove paper. 14 7/16 x 10 1/8 in. (36.7 x 25.7 cm). William J. Hitchcock Fund in memory of Grace J. Hitchcock, 2024.170

Grant Wood (American, 1891–1942), *March*. 1939, lithograph on wove paper. 8 7/8 x 11 7/8 in. (18.1 x 28.3 cm). William J. Hitchcock Fund in memory of Grace J. Hitchcock, 2024.171

Dawoud Bey (American, born 1953), *Untitled #22 (Farmhouse), from the series Night Coming Tenderly, Black*. 2017 (printed 2020), gelatin silver print mounted to Dibond. 44 x 55 in. (111.8 x 139.7 cm). Partial purchase with funds from the Mrs. George W. Stevens Fund, and partial gift of David Lusenhop in honor of the artist, 2024.172

Dawoud Bey (American, born 1953), *A Girl with a Knife Nosepin, Brooklyn*. 1990 (printed 2020), gelatin silver print. Image: 21 3/4 x 15 3/4 in. (55.2 x 40 cm), Sheet: 24 x 20 in. (61 x 50.8 cm). Partial purchase with funds from the Mrs. George W. Stevens Fund, and partial gift of David Lusenhop in honor of the artist, 2024.173

Dawoud Bey (American, born 1953), *In This Here Place*. 2019 (printed 2021), ten gelatin silver prints. Each sheet: 24 x 20 in. (61 x 50.8 cm). Partial purchase with funds from the Mrs. George W. Stevens Fund, and partial gift of David Lusenhop in honor of the artist, 2024.174A–J



Jordan Ann Craig (Northern Cheyenne, American, born 1992), *The Space Between The Clouds and The Horizon*. 2024, acrylic on canvas. 86 x 89 x 2 1/2 in. (218.4 x 226.1 x 6.4 cm). Mr. and Mrs. Robert J. Barber Art Fund, 2024.175A–B

Maruyama Okyo (Japanese, 1733–1795), *The Queen Mother of the West*. 1750, ink and color on paper. 38 5/8 x 14 3/8 in. (98.1 x 36.5 cm). Mrs. George W. Stevens Fund, 2024.176

Genki Komai (Japanese, 1747–1797), *Copy of Legendary Chinese Female Figures*. 1771, hanging scroll on paper, ink and color on silk. 10 3/8 x 192 1/8 in. (26.3 x 488 cm). Mrs. George W. Stevens Fund, 2024.177

Yatreda ያጥፊዳ (Ethiopian, founded 2021), *Abyssinian Queen*. 2024, nonfungible token (NFT) of single-channel video. Purchased with funds from the Libbey Endowment, Gift of Edward Drummond Libbey, 2024.178

Isaac Julien (British, born 1960), *Once Again...(Statues Never Die)*. 2022, two-screen film installation, black and white, 4K (4:3 aspect ratio), 9.2 surround sound. 32:32 minutes. Purchased with funds from the Libbey Endowment, Gift of Edward Drummond Libbey, by exchange, 2024.179

Matilda Rosianna Hoover (American, 1818–1844), *Sampler*. 1837, silk on linen. 17 1/2 × 17 1/2 in. (44.5 × 44.5 cm). Dorothy Chandler Fund for 19th century American Art, 2024.180

Blanche Lazzell (American, 1878–1956), *West Virginia Hills*. 1919, printed 1928, white-line woodcut in colors on fibrous Japanese laid paper. Image: 12 × 12 in. (30.5 × 30.5 cm), Sheet: 18 × 15 7/8 in. (45.7 × 40.3 cm). William J. Hitchcock Fund in memory of Grace J. Hitchcock, Purchased with funds from Cheryl (Gurecky) and Richard O'Connor, and Purchased with funds from Janet Rogolsky, 2024.181

Mabel A. Hewit (American, 1903–1984), *Artist Working*. 1937, white-line woodcut in colors on Japan paper. Image: 12 1/8 × 10 7/8 in. (30.8 × 27.6 cm), Sheet: 17 × 13 5/8 in. (43.2 × 34.6 cm). Purchased with funds given by Cheryl (Gurecky) and Richard O'Connor, 2024.182

Etienne Charles LeGuay (French, 1762–1846), *Portrait of Marie-Victoire Jaquotot*. About 1801, gouache(?) on unidentified substrate (possibly porcelain), mounted on paper. 4 1/2 × 3 1/2 in. (11.5 × 8.9 cm). Gift of John Jerome Nailen, 2024.183

Marisol (Escobar) (American [born France], 1930–2016), *Black and White Organic Shapes*. 1998, lithograph on paper. 18 × 34 3/16 in. (45.7 × 86.8 cm), Gift of The Buffalo AKG Art Museum and the Estate of Marisol, 2024.184

Marisol (Escobar) (American [born France], 1930–2016), *Blackbird Love*. 1980, lithograph on ARCHES 88 paper. 30 1/8 × 22 1/2 in. (76.5 × 57.2 cm). Gift of The Buffalo AKG Art Museum and the Estate of Marisol, 2024.185

Marisol (Escobar) (American [born France], 1930–2016), *Budding*. 1980, lithograph on ARCHES 88 paper. 30 1/8 × 22 1/2 in. (76.5 × 57.2 cm). Gift of The Buffalo AKG Art Museum and the Estate of Marisol, 2024.186

Marisol (Escobar) (American [born France], 1930–2016), *Untitled*. 1979, lithograph on paper. 41 7/16 × 29 11/16 in. (105.3 × 75.4 cm). Gift of The Buffalo AKG Art Museum and the Estate of Marisol, 2024.187

Marisol (Escobar) (American [born France], 1930–2016), *Fire*. 1980, lithograph on paper. 30 × 22 in. (76.2 × 55.9 cm). Gift of The Buffalo AKG Art Museum and the Estate of Marisol, 2024.188

Marisol (Escobar) (American [born France], 1930–2016), *Forest*. 1973, lithograph on paper. 19 1/2 × 24 1/2 in. (49.5 × 62.2 cm). Gift of The Buffalo AKG Art Museum and the Estate of Marisol, 2024.189

Marisol (Escobar) (American [born France], 1930–2016), *French Curve*. 1970, intaglio on Dutch etching paper. 26 3/16 × 19 3/16 in. (66.5 × 48.7 cm). Gift of The Buffalo AKG Art Museum and the Estate of Marisol, 2024.190

Marisol (Escobar) (American [born France], 1930–2016), *Gold Heart*. 1979, lithograph on paper. 43 3/4 × 29 3/4 in. (111.1 × 75.6 cm). Gift of The Buffalo AKG Art Museum and the Estate of Marisol, 2024.191

Marisol (Escobar) (American [born France], 1930–2016), *Hate*. 1979, lithograph on paper. 41 3/4 × 29 3/4 in. (106 × 75.6 cm). Gift of The Buffalo AKG Art Museum and the Estate of Marisol, 2024.192

Marisol (Escobar) (American [born France], 1930–2016), *I Hate You*. 1973, etching. 29 3/4 × 22 1/4 in. (75.6 × 56.5 cm). Gift of The Buffalo AKG Art Museum and the Estate of Marisol, 2024.193

Marisol (Escobar) (American [born France], 1930–2016), *Love*. 1979, lithograph on paper. 41 3/4 × 29 3/4 in. (106 × 75.6 cm). Gift of The Buffalo AKG Art Museum and the Estate of Marisol, 2024.194

Marisol (Escobar) (American [born France], 1930–2016), *Morning Glory*. About 1970–1973, etching on paper. 20 × 14 in. (50.8 × 35.6 cm). Gift of The Buffalo AKG Art Museum and the Estate of Marisol, 2024.195

Below: Marisol (Escobar) (American [born France], 1930–2016), *Pocahontas*. 1976, lithograph. 26 × 19 5/8 in. (66 × 49.8 cm). Gift of The Buffalo AKG Art Museum and the Estate of Marisol, 2024.196



Marisol (Escobar) (American [born France], 1930–2016), *Saca la Lengua*. 1972, lithograph on paper. 41 1/4 × 29 1/2 in. (104.8 × 74.9 cm). Gift of The Buffalo AKG Art Museum and the Estate of Marisol, 2024.197

Marisol (Escobar) (American [born France], 1930–2016), *Sat*. 1979, lithograph on paper. 41 × 30 in. (104.1 × 76.2 cm). Gift of The Buffalo AKG Art Museum and the Estate of Marisol, 2024.198

Marisol (Escobar) (American [born France], 1930–2016), *Simon Bolivar*. 1978, lithograph on paper. 41 × 29 1/2 in. (104.1 × 74.9 cm). Gift of The Buffalo AKG Art Museum and the Estate of Marisol, 2024.199

Marisol (Escobar) (American [born France], 1930–2016), *Summer Meeting*. 1980, lithograph on ARCHES 88 paper. 30 1/4 × 22 1/2 in. (76.8 × 57.2 cm). Gift of The Buffalo AKG Art Museum and the Estate of Marisol, 2024.200

Marisol (Escobar) (American [born France], 1930–2016), *Sun*. 1979, lithograph on paper. 41 1/2 × 29 3/4 in. (105.4 × 75.6 cm). Gift of The Buffalo AKG Art Museum and the Estate of Marisol, 2024.201

Marisol (Escobar) (American [born France], 1930–2016), *Twins I*. 1979, lithograph on paper. 41 3/4 × 29 3/4 in. (106 × 75.6 cm). Gift of The Buffalo AKG Art Museum and the Estate of Marisol, 2024.202

Marisol (Escobar) (American [born France], 1930–2016), *Twins II*. 1979, lithograph on paper. 42 × 30 inches (106.68 × 76.2 cm). Gift of The Buffalo AKG Art Museum and the Estate of Marisol, 2024.203

Marisol (Escobar) (American [born France], 1930–2016), *Untitled*. 1978, suite of six lithographs. 51 3/4 × 38 in. (131.4 × 96.5 cm). Gift of The Buffalo AKG Art Museum and the Estate of Marisol, 2024.204A–F

Marisol (Escobar) (American [born France], 1930–2016), *Women's Equality from the Kent Bicentennial Portfolio: Spirit of Independence*. 1975, lithograph in fifteen colors on ARCHES cover paper. 34 1/2 × 29 3/4 in. (87.6 × 75.6 cm). Gift of The Buffalo AKG Art Museum and the Estate of Marisol, 2024.205

Marisol (Escobar) (American [born France], 1930–2016), *Woody Allen*. 1985, woodcut on paper. 38 1/2 × 26 in. (97.8 × 66 cm). Gift of The Buffalo AKG Art Museum and the Estate of Marisol, 2024.206

Marisol (Escobar) (American [born France], 1930–2016), [Cover design for 'Marisol Prints' exhibition catalogue, *The New York Cultural Center*]. 1973, print. 12 × 17 in. (30.5 × 43.2 cm). Gift of The Buffalo AKG Art Museum and the Estate of Marisol, 2024.207

Marisol (Escobar) (American [born France], 1930–2016), *Stage II of an Untitled Lithograph*. 1979, lithograph on paper. 41 × 29 1/4 in. (104.1 × 74.3 cm). Gift of The Buffalo AKG Art Museum and the Estate of Marisol, 2024.208

Marisol (Escobar) (American [born France], 1930–2016), *Stage IV of an Untitled Lithograph*. 1979, lithograph on paper. 41 × 29 in. (104.1 × 73.7 cm). Gift of The Buffalo AKG Art Museum and the Estate of Marisol, 2024.209

Marisol (Escobar) (American [born France], 1930–2016), *Stage V of an Untitled Lithograph*. 1979, lithograph on paper. 41 × 29 1/4 in. (104.1 × 74.3 cm). Gift of The Buffalo AKG Art Museum and the Estate of Marisol, 2024.210

Marisol (Escobar) (American [born France], 1930–2016), *Stage III of "Gold Heart."* 1979, lithograph on paper. 44 × 30 in. (111.8 × 76.2 cm). Gift of The Buffalo AKG Art Museum and the Estate of Marisol, 2024.211

Marisol (Escobar) (American [born France], 1930–2016), *Stage II of "Gold Heart."* 1979, lithograph on paper. 44 × 30 in. (111.8 × 76.2 cm). Gift of The Buffalo AKG Art Museum and the Estate of Marisol, 2024.212

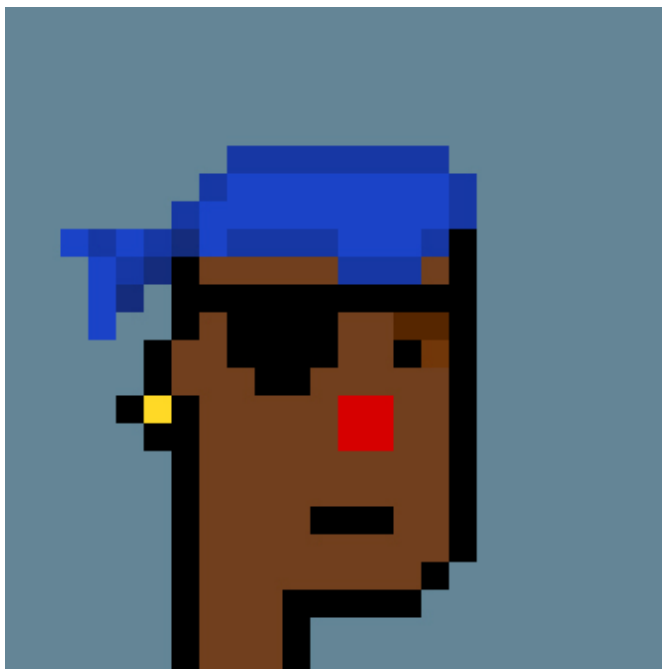
Marisol (Escobar) (American [born France], 1930–2016), *Untitled*. 1979, lithograph on paper. 41 5/8 × 29 3/4 in. (105.7 × 75.6 cm). Gift of The Buffalo AKG Art Museum and the Estate of Marisol, 2024.213

Marisol (Escobar) (American [born France], 1930–2016), *Untitled*. 1979, lithograph on paper. 41 × 29 1/4 in. (104.1 × 74.3 cm). Gift of The Buffalo AKG Art Museum and the Estate of Marisol, 2024.214

Marisol (Escobar) (American [born France], 1930–2016), *Untitled*. 1979, lithograph on paper. 41 1/2 × 29 3/4 in. (105.4 × 75.6 cm). Gift of The Buffalo AKG Art Museum and the Estate of Marisol, 2024.215

Marisol (Escobar) (American [born France], 1930–2016), *Untitled*. 1979, lithograph on paper. 41 1/2 × 29 1/2 in. (105.4 × 75 cm). Gift of The Buffalo AKG Art Museum and the Estate of Marisol, 2024.216

Below: Larva Labs (Canadian, founded 2005), *Cryptopunk* #9833. June 2017, NFT, PNG. 24 × 24 pixels. Purchased with funds from the Libbey Endowment, Gift of Edward Drummond Libbey, by exchange, 2024.217



Nina Chanel Abney (American, born 1982), *Superpunk* #198. May 18, 2024, NFT, JPG. 1024 × 1024 pixels. Purchased with funds from the Libbey Endowment, Gift of Edward Drummond Libbey, by exchange, 2024.218

Eugene Tapaha (Diné/Navajo, born 1967), *Solidarity, Sisterhood, Monument Valley, Arizona*. 2020, archival pigment print. 38 × 56 in. (96.5 × 142.2 cm). Frederick B. and Kate L. Shoemaker Fund, 2024.219

Eugene Tapaha (Diné/Navajo, born 1967), *Four Worlds, Teton National Park, WY, Cayuse, Umatilla, Newe Sogobia and Tsésthó'e*. 2020, archival pigment print. 56 × 38 in. (142.2 × 96.5 cm). Frederick B. and Kate L. Shoemaker Fund, 2024.220

Japanese, *Reliquary Container*. 1185–1333 (Kamakura Period), bronze with open work, rock crystal, and pearl. 5 3/8 × 2 5/8 × 2 5/8 in. (13.7 × 6.7 × 6.7 cm). Purchased with funds from the Florence Scott Libbey Bequest in Memory of her Father, Maurice A. Scott, 2024.221

Right: Japanese, *Standing Senju Kannon (Sahasrabhuja)*. 1185–1333 (Kamakura Period), gilded bronze. 10 3/8 × 4 3/8 × 4 1/4 in. (26.4 × 11.1 × 10.8 cm). Purchased with funds from the Libbey Endowment, Gift of Edward Drummond Libbey, 2024.222

Lenore Tawney (American, 1907–2007), *Heart*. 1975, linen. 109 3/4 × 109 in. (278.8 × 276.9 cm). Purchased with funds from the Libbey Endowment, Gift of Edward Drummond Libbey, 2024.223

Lenore Tawney (American, 1907–2007), *Time Roars Like a Seashell*. 1967, paper, watercolor, bone. 10 1/2 × 14 3/4 in. (26.7 × 37.5 cm). Mrs. George W. Stevens Fund, 2024.224

Beth Lipman (American, born 1971), *ReGift*. 2023, Glass, wood, metal; video. 117 × 185 × 307 in. (297.2 × 469.9 × 779.8 cm). Purchased with funds from the Florence Scott Libbey Bequest in Memory of her Father, Maurice A. Scott, 2024.225A–B

Brett Weston (American, 1911–1993), *Window Display Reflection, California*. 1954, silver gelatin print. 7 1/2 × 9 1/2 in. (19.1 × 24.1 cm). Gift from the Christian Keese Collection, 2024.226

Brett Weston (American, 1911–1993), *Rock Formation, Point Lobos, California*. 1963 (printed 1983), silver gelatin print. 10 1/4 × 13 5/8 in. (26 × 34.6 cm). Gift from the Christian Keese Collection, 2024.227

Brett Weston (American, 1911–1993), *Headstone and Lichen, Japan*. 1970, silver gelatin print. 13 × 10 5/8 in. (33 × 27 cm). Gift from the Christian Keese Collection, 2024.228

Brett Weston (American, 1911–1993), *Mexican Landscape*. 1968, silver gelatin print. 10 1/8 × 13 1/4 in. (25.7 × 33.7 cm). Gift from the Christian Keese Collection, 2024.229

Brett Weston (American, 1911–1993), *Volcanic Devastation, Hawaii*. 1980, silver gelatin print. 10 5/8 × 13 5/8 in. (27 × 34.6 cm). Gift from the Christian Keese Collection, 2024.230

Brett Weston (American, 1911–1993), *Kelp*. 1969, silver gelatin print. 10 3/4 × 12 3/8 in. (27.3 × 31.4 cm). Gift from the Christian Keese Collection, 2024.231

Brett Weston (American, 1911–1993), *Dune, Yucca Plants, White Sands, New Mexico*. 1946 (printed later), silver gelatin print. 8 × 10 in. (20.3 × 25.4 cm). Gift from the Christian Keese Collection, 2024.232

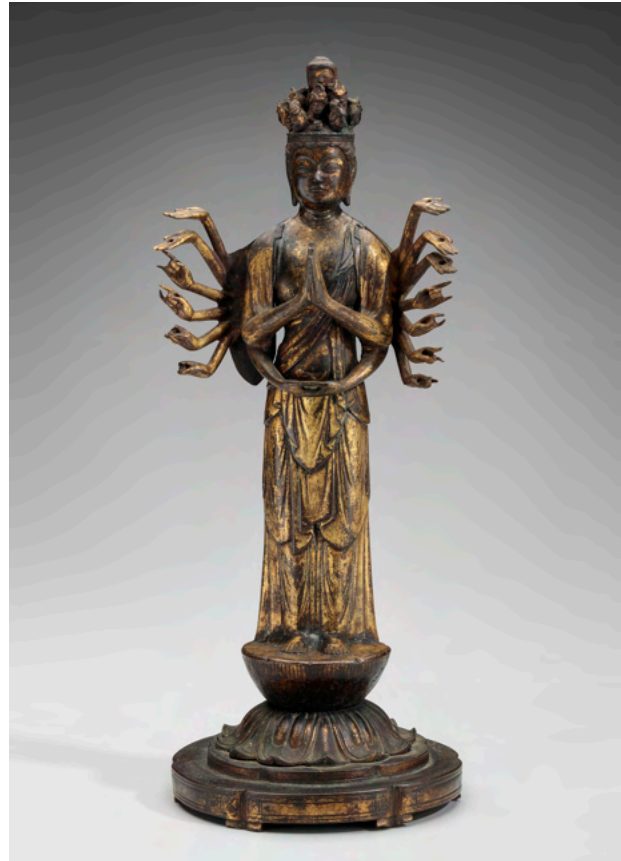
Brett Weston (American, 1911–1993), *Storefront, Window Display, New York*. 1944, silver gelatin print. 8 × 10 in. (20.3 × 25.4 cm). Gift from the Christian Keese Collection, 2024.233

Brett Weston (American, 1911–1993), *Cactus*. 1950, silver gelatin print. 8 × 10 in. (20.3 × 25.4 cm). Gift from the Christian Keese Collection, 2024.234

Brett Weston (American, 1911–1993), *Plant, Succulents, Rock*. 1950, silver gelatin print. 10 × 8 in. (25.4 × 20.3 cm). Gift from the Christian Keese Collection, 2024.235

Brett Weston (American, 1911–1993), *Rock, Kelp, Water*. 1950, silver gelatin print. 8 × 10 in. (20.3 × 25.4 cm). Gift from the Christian Keese Collection, 2024.236

Brett Weston (American, 1911–1993), *Building and Tree, Landscape*. 1936, silver gelatin print. 8 × 10 in. (20.3 × 25.4 cm). Gift from the Christian Keese Collection, 2024.237



Brett Weston (American, 1911–1993), *Trees*. 1975, silver gelatin print. 8 × 10 in. (20.3 × 25.4 cm). Gift from the Christian Keese Collection, 2024.238

Brett Weston (American, 1911–1993), *Paint*. 1976, silver gelatin print. 8 × 10 in. (20.3 × 25.4 cm). Gift from the Christian Keese Collection, 2024.239

Brett Weston (American, 1911–1993), *Building Reflection*. 1976, silver gelatin print. 10 × 8 in. (25.4 × 20.3 cm). Gift from the Christian Keese Collection, 2024.240

Brett Weston (American, 1911–1993), *Cantaloupe*. 1975, silver gelatin print. 8 × 10 in. (20.3 × 25.4 cm). Gift from the Christian Keese Collection, 2024.241

Brett Weston (American, 1911–1993), *Paint*. 1973, silver gelatin print. 11 × 14 in. (27.9 × 35.6 cm). Gift from the Christian Keese Collection, 2024.242

Brett Weston (American, 1911–1993), *Tar, Paint*. 1975, silver gelatin print. 11 × 14 in. (27.9 × 35.6 cm). Gift from the Christian Keese Collection, 2024.243

Brett Weston (American, 1911–1993), *Ice*. 1978, silver gelatin print. 14 × 11 in. (35.6 × 27.9 cm). Gift from the Christian Keese Collection, 2024.244

Brett Weston (American, 1911–1993), *Building, New York*. 1980, silver gelatin print. 14 × 11 in. (35.6 × 27.9 cm). Gift from the Christian Keese Collection, 2024.245

Brett Weston (American, 1911–1993), *Rock Wall, Glen Canyon*. 1960, silver gelatin print. 11 × 14 in. (27.9 × 35.6 cm). Gift from the Christian Keesee Collection, 2024.246

Brett Weston (American, 1911–1993), *Rock Formation*. About 1969, silver gelatin print. 11 1/8 × 14 1/8 in. (28.3 × 35.9 cm). Gift from the Christian Keesee Collection, 2024.247

Brett Weston (American, 1911–1993), *Trees, Hawaii*. 1978, silver gelatin print. 14 × 11 in. (35.6 × 27.9 cm). Gift from the Christian Keesee Collection, 2024.248

Brett Weston (American, 1911–1993), *Plants, Hawaii*. About 1985, silver gelatin print. 14 × 11 in. (35.6 × 27.9 cm). Gift from the Christian Keesee Collection, 2024.249

Brett Weston (American, 1911–1993), *Rock Formation*. 1930 (printed later), silver gelatin print. 11 × 14 in. (27.9 × 35.6 cm). Gift from the Christian Keesee Collection, 2024.250

Jordan Buschur (American, born 1979), *Linework, Shadow Play*. 2024, single-channel video. 00:00:48 seconds (1,800 × 2,400 pixels). Purchased with funds from the Florence Scott Libbey Bequest in Memory of her Father, Maurice A. Scott, 2024.251

Gene Davis (American, 1920–1985), *Picnic*. 1980, acrylic on canvas. 70 × 20 1/2 in. (177.8 × 52.07 cm). Gift of Byron S. Dunham and the Estate of Richard J. Hanna, 2024.252

Jesus Rafael Soto (Venezuelan, 1923–2005), *Paralelas Vibrantes*. 1979, acrylic and stainless steel. 15 3/4 × 10 1/2 × 4 in. (40.01 × 26.67 × 10.16 cm). Gift of Byron S. Dunham and the Estate of Richard J. Hanna, 2024.253

Maruyama Okyo (Japanese, 1733–1795), *The Orchid Pavilion Gathering*. 1768 ink and gold on paper. Panel A: 68 1/4 × 55 3/4 × 1 in. (173.4 × 141.6 × 2.5 cm), Panel B: 68 1/8 × 38 × 3/4 in. (173 × 96.5 × 1.9 cm), Panel C: 68 3/8 × 38 1/8 × 3/4 in. (173.7 × 96.8 × 1.9 cm), Panel D: 68 1/4 × 38 5/8 × 1 in. (173.4 × 98.1 × 2.5 cm), Panel E: 68 3/8 × 28 5/8 × 3/4 in. (173.7 × 72.7 × 1.9 cm), Panel F: 68 3/8 × 28 5/8 × 1 in. (173.7 × 72.7 × 2.5 cm), Panel G: 68 1/4 × 28 5/8 × 3/4 in. (173.4 × 72.7 × 1.9 cm), Panel H: 68 3/8 × 29 1/8 × 1 in. (173.7 × 74 × 2.5 cm), Panel I: 68 3/8 × 28 3/4 × 1 in. (173.7 × 73 × 2.5 cm). Mrs. George W. Stevens Fund, 2025.1A–I

Leonard Harmon (Lenape/Nanticoke, American, born 1983), *He Walks Around*. 2024, Porcupine quills, horse and deer hide, deer hair, turkey feathers, glass beads, brass beads, brass Ethiopian bells, German wool, and commercial dyes. 50 13/16 × 40 5/8 × 30 1/2 in. (129 × 103.2 × 77.4 cm). Purchased with funds from the Libbey Endowment, Gift of Edward Drummond Libbey, 2025.2

Lenore Tawney (American, 1907–2007), *Udjat*. 1968, mixed media. 2 3/8 × 7 1/4 × 5 1/2 in. (6 × 18.4 × 14 cm). Gift of the Lenore G. Tawney Foundation, 2025.3

Right: John Rhoden (American, 1918–2001), *Untitled*. 1947, mahogany. 48 × 17 1/2 × 1 1/2 in. (121.9 × 44.5 × 3.8 cm). Gift from the John Walter Rhoden and Richanda Phillips Rhoden Collection at the Pennsylvania Academy of the Fine Arts, 2025.4

John Rhoden (American, 1918–2001), *Mother and Child II*. 1962, wood. 42 × 12 × 10 in. (106.7 × 30.5 × 25.4 cm). Gift from the John Walter Rhoden and Richanda Phillips Rhoden Collection at the Pennsylvania Academy of the Fine Arts, 2025.5

Uriah Eberhart (American, 1866–1937), *Secretary*. 1900, wood. 99 1/4 × 53 3/4 × 22 3/4 in. (252.1 × 136.5 × 57.8 cm). The Charles Braton Johnson Family Furniture Fund, 2025.6

Roxy Paine (American, born 1966), *Interim*. 2003, stainless steel. 35 ft (420 1/8 in.) (10.668 m [1066.8 cm]). Gift of David K. and Georgia E. Welles, 2025.7

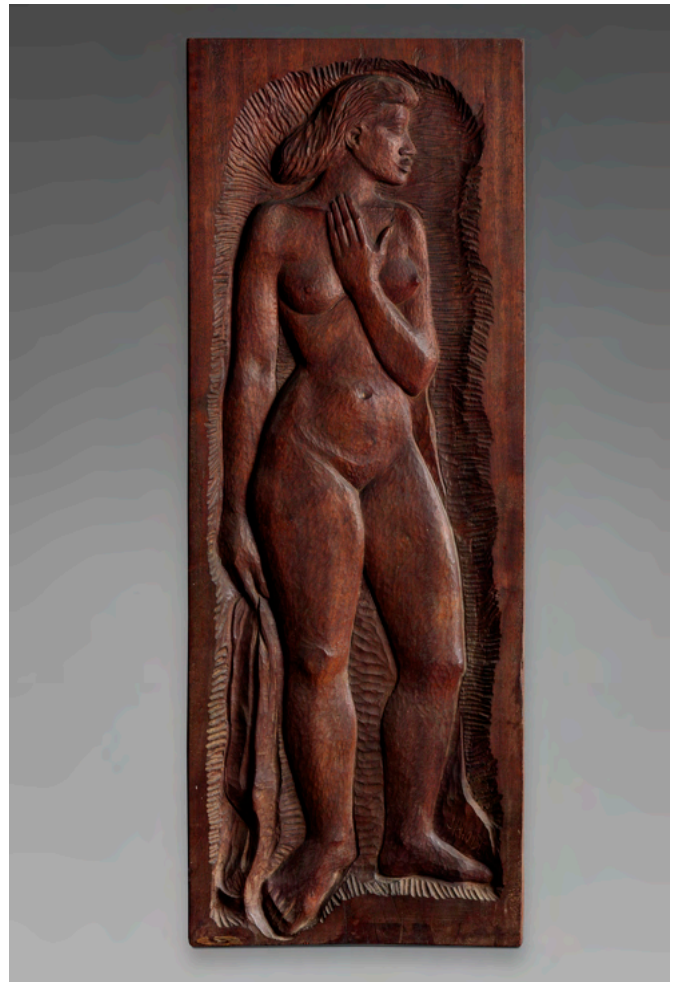
Roxy Paine (American, born 1966), *Model for Toledo Tree*. 2003, stainless steel. 40 × 40 × 51 in. (101.6 × 101.6 × 129.5 cm). Gift of David K. and Georgia E. Welles, 2025.8

Richard Diebenkorn (American, 1922–1993), *Ocean Park #32*. 1970, oil on canvas. 93 × 81 in. (236.2 × 205.7 cm). Gift of David K. and Georgia E. Welles, 2025.9

Judy Kensley McKie (American, born 1944), *Fish Bench*. 1999, cast bronze. 18 × 76 × 29 in. (45.7 × 73.7 cm). Gift of David K. and Georgia E. Welles, 2025.10

Judy Kensley McKie (American, born 1944), *Alligator Bench*. 1991, cast bronze. 27 × 66 × 14 in. (68.6 × 167.6 × 35.6 cm). Gift of David K. and Georgia E. Welles, 2025.11

Judy Kensley McKie (American, born 1944), *Grizzly Bear Bench*. 2001, cast bronze. 20 × 72 × 20 in. (50.8 × 182.9 × 50.8 cm). Gift of David K. and Georgia E. Welles, 2025.12



Magdalena Abakanowicz (Polish, 1930–2017), *Hoofed Mammal Heads [Individual Sculpture Titles: Artumasi, Artumani, Artuban]*. About 1989–1990, bronze. Artumasi: 61 × 13 3/4 × 19 3/4 in. (154.9 × 34.9 × 50.2 cm), Artumani: 68 × 12 × 24 in. (172.7 × 30.5 × 61 cm), Artuban: 65 1/2 × 41 3/4 × 20 1/2 in. (166.4 × 106 × 52.1 cm). Gift of David K. and Georgia E. Welles, 2025.13A–C

Martin Puryear (American, born 1941), *Bound Cone*. 1973, oak and rope. 69 1/2 × 11 × 11 in. (176.5 × 27.9 × 27.9 cm). Gift of David K. and Georgia E. Welles, 2025.14

Scott Burton (American, 1939–1989), *Rock Chair*. About 1981–1982, white lava stone. 41 3/4 × 32 1/2 × 48 in. (106 × 82.6 × 121.9 cm). Gift of David K. and Georgia E. Welles, 2025.15

Roman, *Statuette of Asclepius Holding an Egg*. Late 2nd century AD, marble. 19 3/4 × 7 7/8 × 3 15/16 in. (50.2 × 20 × 10 cm). Museum Art Fund and Purchased with funds from the Libbey Endowment, Gift of Edward Drummond Libbey, 2025.16

Amoako Boafo (Ghanaian, born 1984), *White Picnic Blanket*. 2021, oil on canvas. 85 1/16 × 72 7/16 in. (216.1 × 184 cm). Purchased with funds from the Libbey Endowment, Gift of Edward Drummond Libbey, 2025.17

Erick Calderon (aka Snowfro) (American, Mexican, born 1981), *Chromie Squiggle #1458*. 2020, NFT, Solidity code, vector-based image. No set size. Purchased with funds from the Libbey Endowment, Gift of Edward Drummond Libbey, by exchange, 2025.18

Amanda Olmsted (American, 1806–1883), *Sampler*. 1836, silk on linen. 17 7/8 × 17 1/2 × 1/16 in. (45.4 × 44.5 × 0.2 cm). Purchased with funds given by Dianne Klein, 2025.19

Attributed to V. van der Plaats (Dutch) [author], and Petrus Conradi (Dutch) [publisher], *Nederlandsche reizen, tot bevordering van den koophandel, na de meest afgelegene gewesten des aardkloot*. 1784–1787, printed book with engraved illustrations. H: 8 11/16 in. (22 cm) [each]. Mrs. George W. Stevens Fund, 2025.20A–F

Soga Shohaku (Japanese, 1733–1798), *Soushi Arai Komachi Zu Byobu (Ono no Komachi washes the book)*. 1760, ink and light color on paper. 57 3/8 × 139 in. (145.8 × 353.1 cm). Mrs. George W. Stevens Fund, 2025.21

Kobayakawa Kiyoshi (Japanese, 1899–1948), *Urabon (Obon, Festival of Souls) no Nagasaki*. 1930, mineral pigments, organic pigments and ink on silk. 90 × 68 in. (228.6 × 172.7 cm). Purchased with funds from the Libbey Endowment, Gift of Edward Drummond Libbey, by exchange, 2025.22

Jordan Buschur (American, born 1979), *Handiwork, Shadow Play*. 2024, single-channel video. 00:00:48 seconds. Gift of the Artist, 2025.23

Jordan Buschur (American, born 1979), *Linework, Shadow Play*. 2024, acrylic on panel. 16 × 12 in. (40.6 × 30.5 cm). Gift of the Artist, 2025.24

Cornelius Pronk (Dutch, 1691–1759), *Plate*. About 1738–1740, Chinese export porcelain. Diameter: 10 5/8 in. (27 cm). Museum Art Fund, 2025.25

Abu Muhammad 'Abd al-Qayyum ibn Muhammad ibn Karamshah al-Tabrizi (Iranian/Jalayirids, 14th century), *Leaf from the Five-Surahs Qur'an*. About 1370 AD, ink and gold on paper. 16 7/8 × 13 1/2 in. (42.9 × 34.3 cm). Mrs. George W. Stevens Fund, 2025.26

Below: Jimo Akolo (Nigerian, 1934–2023), *God of Thunder*. 1964, oil on canvas. 59 1/2 × 39 1/2 × 1 in. (151.1 × 100.3 × 2.5 cm) [framed]. Gift of Mrs. C. Lockhart McKelvy, by exchange, 2025.27



Jordan Buschur (American, born 1979), *Handiwork, Shadow Play*. 2024, acrylic on panel. 16 × 12 in. (40.6 × 30.5 cm). Purchased with funds from the Florence Scott Libbey Bequest in Memory of her Father, Maurice A. Scott, 2025.28

Sachiko Fujino (Japanese, born 1950), *Form '20-9*. 2020, stoneware with matte glaze. 15 × 11 × 15 in. (38.1 × 27.9 × 38.1 cm). Anonymous Donation in Honor of Adam Levine, Director of the Toledo Museum of Art, 2025.29

Momoko Takeshita Keane (Japanese), *Embrace*. 2017, coil-built stoneware, wood fired. 15 1/2 × 11 1/4 × 12 1/2 in. (39.4 × 28.6 × 31.8 cm). Anonymous Donation in Honor of Adam Levine, Director of the Toledo Museum of Art, 2025.30

Susumu Ikuta (Japanese, born 1934), *Lidded Box*. Between 1978–2016, porcelain with underglaze. 8 × 5 1/4 × 7 in. (20.3 × 13.3 × 17.8 cm). Anonymous Donation in Honor of Adam Levine, Director of the Toledo Museum of Art, 2025.31A–B

Coors Porcelain Company (founded 1910), *Skyscraper Vase*. About 1930–1940, glazed earthenware. 8 3/4 × 6 × 3 3/8 in. (22.2 × 15.2 × 8.6 cm)/ Gift of Tom Marino, 2025.32

Frank Ferrell (American, 1878–1961), *Shape #389-9, 'Emerald urn' Futura Line*. About 1928, glazed earthenware. 9 × 5 × 5 1/4 in. (22.9 × 12.7 × 13.3 cm). Gift of Tom Marino, 2025.33

Right: Stangl Pottery (1860–1978), *Skyscraper Fan Vase*. About 1929–1934, Earthenware with sunburst glaze. 6 1/8 × 4 × 2 1/2 in. (15.6 × 10.2 × 6.4 cm). Gift of Tom Marino, 2025.34

Olamilekan Abatan (Nigerian, born 1997), *The Next Move*. 2023, charcoal, acrylic, wax fabric on paper. 41 3/4 × 61 7/16 in. (106 × 156.1 cm). Mrs. George W. Stevens Fund, 2025.35

Rose B. Simpson (Tewa, American, born 1983), *Maria*. 2021, lithograph. Sheet: 18 × 46 in. (45.7 × 116.8 cm), Image: 12 × 41 in. (30.5 × 104.1 cm). William J. Hitchcock Fund in memory of Grace J. Hitchcock, 2025.36

Rose B. Simpson (Tewa, American, born 1983), *Let Story Go*. 2021 (printed 2022), ten-color lithograph. Sheet: 60 × 28 in. (152.4 × 71.1 cm), Image: 60 × 28 in. (152.4 × 71.1 cm). William J. Hitchcock Fund in memory of Grace J. Hitchcock, 2025.37

Margaret Roach Wheeler (Chickasaw/Choctaw, born 1943), *Murder of One*. 1993 and 2019, silk wool, commercial dyes, ultrasuede, glass beads, silver, onyx, wood. 72 × 24 × 12 in. (182.9 × 61 × 30.5 cm). Mr. and Mrs. Robert J. Barber Art Fund, 2025.38

Joan Miró (Spanish, 1893–1983), *Tête et Oiseau*. 1981–1983, bronze on wooden base. 26 3/8 × 15 3/4 × 9 in. (67 × 40 × 22.9 cm). Gift of David K. and Georgia E. Welles, 2025.39

Martin Puryear (American, born 1941), *Untitled*. 1989, wood (poplar and pine). 27 1/2 × 30 × 24 in. (69.9 × 76.2 × 61 cm). Gift of David K. and Georgia E. Welles, 2025.40

Martin Puryear (American, born 1941), *Untitled*. 1989, bronze. 19 × 9 1/2 × 9 1/2 in. (48.3 × 24.1 × 24.1 cm). Gift of David K. and Georgia E. Welles, 2025.41

Martin Puryear (American, born 1941), *Untitled V*. 2005, color softground etching with aquatint. 29 × 34 in. (73.7 × 86.4 cm). Gift of David K. and Georgia E. Welles, 2025.42

Kara Elizabeth Walker (American, born 1969), *African/American*. 1998, Linoleum cut print. 40 × 60 1/2 in. (101.6 × 153.7 cm). Gift of David K. and Georgia E. Welles, 2025.43

Mitchell Zephier (Sicangu Oyate Lakota, born 1952), *Whistle*. 1970s–1990s, silver. 1/2 × 8 1/8 in. (1.3 × 20.6 cm). Gift of Ralph T. Coe Center for the Arts, 2025, 2025.44



Mitchell Zephier (Sicangu Oyate Lakota, born 1952), *Ring*. 1970s–1990s, silver and turquoise. 1 5/8 × 3/4 × 1 1/8 in. (4.1 × 1.9 × 2.9 cm). Gift of Ralph T. Coe Center for the Arts, 2025, 2025.45

Bruce Caesar (Sac and Fox, born 1952), *Silver Baby Cup*. 1989, silver. 3 1/8 × 3 7/8 × 2 1/2 in. (7.9 × 9.8 × 6.4 cm). Gift of Ralph T. Coe Center for the Arts, 2025, 2025.46

Julius Caesar (Pawnee, 1910–1982), *Necklace*. 1970–1989, Silver, turquoise, brass, leather, synthetic stones. 18 × 3 1/8 in. (45.7 × 7.9 cm). Gift of Ralph T. Coe Center for the Arts, 2025, 2025.47

Wasco, *Hemp Bag*. Late 19th century, native hemp, leather. 7 1/2 × 8 1/4 in. (19.1 × 21 cm). Gift of Ralph T. Coe Center for the Arts, 2025, 2025.48

Lena Barney (Yakima), *Hemp Bag with Strawberry Motif*. 1977, native hemp and cornhusk fiber, smoked hide trim. 8 5/8 × 9 3/8 in. (21.9 × 23.8 cm). Gift of Ralph T. Coe Center for the Arts, 2025, 2025.49

Pomo, *Small Beaded Basket*. About 1960, willow, sedge root, glass. 3 × 5 3/4 in. (7.6 × 14.6 cm). Gift of Ralph T. Coe Center for the Arts, 2025, 2025.50

Washoe, *Basket with Red and Black Stylized Plant Motifs*. Early 20th century, Redbud, willow, martynia. 4 × 7 1/4 in. (10.2 × 18.4 cm). Gift of Ralph T. Coe Center for the Arts, 2025, 2025.51

Pomo, *Miniature Feather Basket*. Early 20th century, immature quail top-knots, breast of meadowlark feathers (a) mallard duck (b), willow. Diameter: 2 1/4 in. (5.1 cm). Gift of Ralph T. Coe Center for the Arts, 2025, 2025.52

Pomo, *Miniature Yellow Feather Basket*. 1900–1910, immature quail top-knots, breast of meadowlark feathers (a) mallard duck (b), willow. Diameter: 2 1/4 in. (5.7 cm). Gift of Ralph T. Coe Center for the Arts, 2025, 2025.53

Pomo, *Willow Basket with Clam Shells*. 1880s–1890s, willow, sedge, clam shell. 11 1/2 × 18 in. (29.2 × 45.7 cm). Gift of Ralph T. Coe Center for the Arts, 2025, 2025.54

Maidu, *Basket in Bowl Form*. About 1895, willow, sedge, redbud fibers. 4 × 6 1/2 in. (10.2 × 16.5 cm). Gift of Ralph T. Coe Center for the Arts, 2025, 2025.55

Attributed to Elizabeth Hickox (Wiyot/Karuk, Native American, 1875–1947), *Woven Hat*. About 1930, hazel, pine root, bear grass, maidenhair fern, and bird quill. 3 5/8 × 7 1/2 in. (9.2 × 19.1 cm). Gift of Ralph T. Coe Center for the Arts, 2025, 2025.56

Maggie Painter (Chemehuevi), *Basket with Butterfly Motif*. 1920s–1940s, willow, juncus, bulrush root and devil's claw. 2 1/4 × 3 1/4 in. (5.7 × 8.3 cm). Gift of Ralph T. Coe Center for the Arts, 2025, 2025.57

Chemehuevi, *Basket in Olla Form with Zig Zag Motif*. About 1910, willow, devil's claw, vegetal dye. 5 3/4 × 7 in. (14.6 × 17.8 cm). Gift of Ralph T. Coe Center for the Arts, 2025, 2025.58

Achomawi, *Beaded Sash*. About 1900, glass beads, fiber. 3 1/2 × 41 3/4 in. (8.9 × 106 cm). Gift of Ralph T. Coe Center for the Arts, 2025, 2025.59

Pomo, *Breastplate Necklace*. Late 19th century, cut clam shell, glass beads, fiber. 7 3/4 × 12 1/2 in. (19.7 × 31.8 cm). Gift of Ralph T. Coe Center for the Arts, 2025, 2025.60

Caddo, *Incised Bowl*. 1200–1250 CE, ceramic. 5 3/4 × 10 in. (14.6 × 25.4 cm). Gift of Ralph T. Coe Center for the Arts, 2025, 2025.61

Diné (Navajo), *First Phase Concho Belt*. 1870s, silver and leather. 2 1/2 × 41 1/2 in. (6.4 × 105.4 cm). Gift of Ralph T. Coe Center for the Arts, 2025, 2025.62

Paul Saufkie (Hopi, 1898–1993), *Silver and Turquoise Bracelet*. 1946–1947, ingot silver, turquoise. 1 3/8 × 2 5/8 in. (3.5 × 6.7 cm). Gift of Ralph T. Coe Center for the Arts, 2025, 2025.63

Mojave, *Blue and White Beaded Collar*. About 1875, glass beads and thread. 13 1/2 × 26 1/2 in. (34.3 × 67.3 cm). Gift of Ralph T. Coe Center for the Arts, 2025, 2025.64

Woodland, Mississippian, *Large Monitor Pipe*. 600–1100, steatite. 3 1/4 × 2 1/8 × 14 3/8 in. (8.3 × 5.4 × 36.5 cm). Gift of Ralph T. Coe Center for the Arts, 2025, 2025.65

Maggie Mayo James (Washoe, 1870–1952), *Basket with Stairstep Motif*. About 1915, willow, redbud, bracken fern root. 4 1/2 × 6 1/4 in. (11.4 × 15.9 cm). Gift of Ralph T. Coe Center for the Arts, 2025, 2025.66

Hupa, *Horn Purse*. About 1875, elk horn, vegetal fibers, pigment. 5 1/2 in. (14 cm). Gift of Ralph T. Coe Center for the Arts, 2025, 2025.67

Mojave, *Beaded Collar*. About 1875, glass trade beads, thread, hide. Gift of Ralph T. Coe Center for the Arts, 2025, 2025.68

Diné (Navajo), *Bracelet*. 1940–1960, silver and turquoise. 3 × 4 1/2 × 2 1/4 in. (7.6 × 11.4 × 5.7 cm). Gift of Ralph T. Coe Center for the Arts, 2025, 2025.69

Roderick Kaskalla (Zuni), *Bracelet and Ring*. 1970s, silver and turquoise. Bracelet: 3/4 × 2 3/4 × 2 in. (1.9 × 7 × 5.1 cm), Ring: 1/2 × 1 × 1 1/8 in. (1.3 × 2.5 × 2.9 cm). Gift of Ralph T. Coe Center for the Arts, 2025, 2025.70A–B

Diné (Navajo), *Silver Necklace*. 1950s–1970s, silver. 3 × 12 in. (7.6 × 30.5 cm). Gift of Ralph T. Coe Center for the Arts, 2025, 2025.71

Diné (Navajo), *Pair of Silver Earrings*. 1920–1940, silver. 2 1/4 × 3/4 in. (5.7 × 1.9 cm). Gift of Ralph T. Coe Center for the Arts, 2025, 2025.72

Diné (Navajo), *Silver and Turquoise Bracelet*. Early 20th century, silver and turquoise. 1 1/2 × 2 1/2 × 2 in. (3.8 × 6.4 × 5.1 cm). Gift of Ralph T. Coe Center for the Arts, 2025, 2025.73

Julius Caesar (Pawnee, 1910–1982), *Silver and Clamshell Bracelet*. Mid-20th century, silver and clamshell. 2 1/4 × 2 1/2 × 2 1/4 in. (5.7 × 6.4 × 5.7 cm). Gift of Ralph T. Coe Center for the Arts, 2025, 2025.74

Mitchell Zephier (Sicangu Oyate Lakota, born 1952), *Roach Spreader*. Mid to late 20th century, silver and hide. 3 3/4 × 2 3/4 × 6 in. (9.5 × 7 × 15.2 cm). Gift of Ralph T. Coe Center for the Arts, 2025, 2025.75

Diné (Navajo), *Coral Necklace*. 1920–1930, coral and silver. 14 1/2 in. (36.8 cm). Gift of Ralph T. Coe Center for the Arts, 2025, 2025.76

Washoe, *Basket Bowl*. 1920s–1930s, willow, glass beads, and cotton thread. 1 1/2 × 3 1/4 in. (3.8 × 8.3 cm). Gift of Ralph T. Coe Center for the Arts, 2025, 2025.77

Indigenous North American, *Bannerstone*. About 1500 BCE (Glacial Kame Period), stone. Gift of Ralph T. Coe Center for the Arts, 2025, 2025.78

Indigenous North American, *Bannerstone*. About 1500 BCE (Glacial Kame Period), stone. Gift of Ralph T. Coe Center for the Arts, 2025, 2025.79

Indigenous North American, *Bannerstone*. About 1500 BCE (Glacial Kame Period), stone. Gift of Ralph T. Coe Center for the Arts, 2025, 2025.80

Indigenous North American, *Bannerstone*. About 1500 BCE (Glacial Kame Period), stone. Gift of Ralph T. Coe Center for the Arts, 2025, 2025.81

Indigenous North American, *Bannerstone*. n.d., carved stone. Gift of Ralph T. Coe Center for the Arts, 2025, 2025.82

Indigenous North American, *Birdstone*. About 1500 BCE (Glacial Kame Period), stone. Gift of Ralph T. Coe Center for the Arts, 2025, 2025.83

Indigenous North American, *Birdstone*. About 1500 BCE (Glacial Kame Period), stone. Gift of Ralph T. Coe Center for the Arts, 2025, 2025.84

- Havasupai, *Beaded Collar*, n.d., beads. 9 1/4 × 20 1/2 in. (23.5 × 52.1 cm). Gift of Ralph T. Coe Center for the Arts, 2025, 2025.85
- Cahuilla, *Basket Bowl*. About 1890, deer grass, sumac, juncus. 2 3/4 × 7 in. (7 × 17.8 cm). Gift of Ralph T. Coe Center for the Arts, 2025, 2025.86
- Hupa or Yurok, *Carved Purse*. 19th century, bone or horn. 2 × 6 in. (5.1 × 15.2 cm). Gift of Ralph T. Coe Center for the Arts, 2025, 2025.87
- Achomawi, *Pouch*. About 1900, beads and thread. 7 1/4 × 6 1/4 in. (18.5 × 15.9 cm). Gift of Ralph T. Coe Center for the Arts, 2025, 2025.88
- Mrs. Amateros (Yokuts), *Basket*. About 1880, deer grass, split sedge root, dyed bracken fern root. 6 3/8 × 11 1/2 in. (16.1 × 29.2 cm). Gift of Ralph T. Coe Center for the Arts, 2025, 2025.89
- Tubatulabal, *Basket*. About 1890, willow, sumac, yucca root, devil's claw. 9 × 21 1/2 in. (22.9 × 54.6 cm). Gift of Ralph T. Coe Center for the Arts, 2025, 2025.90
- North American, *Beaver Effigy Pipe*. About 1860, catlinite. 14 1/2 in. (36.8 cm). Gift of Ralph T. Coe Center for the Arts, 2025, 2025.91
- Justin Wilson Sr. (Diné/Navajo), *Turquoise Cluster Pin*. About 1960s, turquoise, sterling silver. 6 in. (15.2 cm). Gift of Ralph T. Coe Center for the Arts, 2025, 2025.92
- Diné (Navajo), *Silver and Turquoise Bracelet*. 1910s–1920s, silver and turquoise. 3/4 × 2 3/4 × 2 1/4 in. (1.9 × 7 × 5.7 cm). Gift of Ralph T. Coe Center for the Arts, 2025, 2025.93
- Tom Burnside (Diné/Navajo, 1910–1957), *Canteen*. 1946–1966, silver. 4 1/4 × 3 3/4 in. (10.8 × 9.5 cm). Gift of Ralph T. Coe Center for the Arts, 2025, 2025.94
- Diné (Navajo), *Turquoise Necklace*. Early 20th century, turquoise. Gift of Ralph T. Coe Center for the Arts, 2025, 2025.95
- Dan Simplicio (Zuni, 1917–1969), *Turquoise, Coral, and Silver Ring*. 1935–1955, silver, turquoise, coral. 1 1/2 in. (3.8 cm). Gift of Ralph T. Coe Center for the Arts, 2025, 2025.96
- Apsáalooke (Crow), *Pipe Bag*. About 1930–1940, fiber. 5 × 33 in. (12.7 × 83.8 cm). Gift of Ralph T. Coe Center for the Arts, 2025, 2025.97
- Julius Caesar (Pawnee, 1910–1982), *Shell Ring*. Mid to late 19th century, silver and clam shell. 1 1/2 × 7/8 in. (3.8 × 2.2 cm). Gift of Ralph T. Coe Center for the Arts, 2025, 2025.98
- Kiowa, *Silver Pins*. 20th century, German silver. 1 3/8 × 7/8 in. (3.5 × 2.2 cm). Gift of Ralph T. Coe Center for the Arts, 2025, 2025.99A–B
- Caddo, Mississippian, *Bottle*. 1300–1600 CE, clay. Gift of Ralph T. Coe Center for the Arts, 2025, 2025.100
- Puyallup, *Basket*. Late 19th century, spruce or cedar root, willow, bear grass, aniline dye. 11 1/4 × 10 1/2 × 9 1/4 in. (28.6 × 26.7 × 23.5 cm). Gift of Ralph T. Coe Center for the Arts, 2025, 2025.101
- Puget Sound Salish, *Basket*. Late 19th century, cedar bark, cherry bark, bear grass. 14 1/4 × 11 1/2 × 10 in. (36.2 × 29.2 × 25.4 cm). Gift of Ralph T. Coe Center for the Arts, 2025, 2025.102
- Dale Edaakie (Zuni, born 1938), *Pheasant Pin*. Late 20th to early 21st century, silver with inlaid mother of pearl, opal, and coral. 3 1/2 × 5 1/2 in. (8.9 × 14 cm). Gift of Ralph T. Coe Center for the Arts, 2025, 2025.103
- Akimel O'odham (Pima), *Miniature Basket*. About 1990, horsehair. Gift of Ralph T. Coe Center for the Arts, 2025, 2025.104
- Akimel O'odham (Pima), *Miniature Basket*. About 1990, horsehair. Gift of Ralph T. Coe Center for the Arts, 2025, 2025.105
- Akimel O'odham (Pima), *Miniature Basket*. About 1990, horsehair. Gift of Ralph T. Coe Center for the Arts, 2025, 2025.106
- Akimel O'odham (Pima), *Miniature Basket*. About 1990, horsehair. Gift of Ralph T. Coe Center for the Arts, 2025, 2025.107
- Akimel O'odham (Pima), *Miniature Basket*. About 1990, horsehair. Gift of Ralph T. Coe Center for the Arts, 2025, 2025.108
- Akimel O'odham (Pima), *Miniature Basket*. About 1990, horsehair. Gift of Ralph T. Coe Center for the Arts, 2025, 2025.109
- Akimel O'odham (Pima), *Miniature Basket*. About 1990, horsehair. Gift of Ralph T. Coe Center for the Arts, 2025, 2025.110
- Yokuts, *Basket with Feathers*. About 1940, redbud, bracken fern root, sedge root, quail top-knot feathers. 4 3/4 × 7 in. [9 in. with feathers] (12.1 × 17.8 cm). Gift of Ralph T. Coe Center for the Arts, 2025, 2025.111
- Indigenous North American, *Bird Stone*. 8000–800 BCE (Glacial Kame Period), stone. 2025.112
- Indigenous North American, *Stone Gorget*. 1100 BCE, stone. Gift of Ralph T. Coe Center for the Arts, 2025, 2025.113
- Hupa, *Woven Hat*. Late 19th to early 20th century, sedge, hazel, bracken fern root, and bear grass. 3 1/4 × 5 3/4 in. (8.3 × 14.6 cm). Gift of Ralph T. Coe Center for the Arts, 2025, 2025.114
- Diné (Navajo) *Lapel Clips*. 20th century to 21st century, silver and turquoise. 1 × 1 1/4 in. (2.5 × 3.2 cm). Gift of Ralph T. Coe Center for the Arts, 2025, 2025.115A–B
- Shirley Kills-in-Sight (Diné/Navajo), *Beaded Basket*. About 1977, willow, yucca, glass beads, commercially tanned leather, paper, glue and cotton thread. 4 × 8 3/4 in. (10.2 × 22.2 cm). Gift of Ralph T. Coe Center for the Arts, 2025, 2025.116
- Betty Hatalie (Diné/Navajo, born 1942), *Lidded Basket*. About 2000, willow, yucca, glass beads, commercially tanned leather, paper, glue, and cotton thread. 4 1/2 × 5 1/2 in. (11.4 × 14 cm). Gift of Ralph T. Coe Center for the Arts, 2025, 2025.117
- Hupa, *Hazel Basket*. About 1900–1920, woven hazel, willow, and bear grass. 3 1/4 × 5 3/4 in. (8.3 × 14.6 cm). Gift of Ralph T. Coe Center for the Arts, 2025, 2025.118
- Nimiipuu or Nez Perce, *Corn Husk Bag*. About 1900, corn husk. Gift of Ralph T. Coe Center for the Arts, 2025, 2025.119

Quintin Quam (Zuni, born 1962), *Blue Jay Earrings*. Late 20th century to early 21st century, sterling silver. 1 1/2 x 3/4 in. (3.8 x 1.9 cm). Gift of Ralph T. Coe Center for the Arts, 2025, 2025.120A-B

Justin Wilson Sr. (Diné/Navajo), *Cluster Bracelet*. Mid to late 20th century, sterling silver and turquoise. 1 3/4 x 3 x 2 in. (4.4 x 7.6 x 5.1 cm). Gift of Ralph T. Coe Center for the Arts, 2025, 2025.121

Harlan Coonsis (Zuni, born 1958), *Turtle Pin*. Late 20th century to early 21st century, silver. 1 1/2 x 1 in. (3.8 x 2.5 cm). Gift of Ralph T. Coe Center for the Arts, 2025, 2025.122

Doris Smallcanyon (Diné/Navajo, born 1949), *Kachina Ring*. Mid to late 20th century, silver and turquoise. 2 3/8 x 1 x 1 in. (6 x 2.5 x 2.5 cm). Gift of Ralph T. Coe Center for the Arts, 2025, 2025.123

Charles Malani (Zuni), *Tuxedo Set*. About 2006, silver, jet, mother of pearl. Cufflinks: 1/2 x 1/2 x 1 in. (1.3 x 1.3 x 2.5 cm), Studs: 3/8 x 3/8 x 3/8 in. (1 x 1 x 1 cm). Gift of Ralph T. Coe Center for the Arts, 2025, 2025.124A-F

Indigenous Southwest, *Shell and Silver Necklace*. n.d., silver, pen shell, spiny oyster shell. 2 x 26 in. (5.1 x 66 cm). Gift of Ralph T. Coe Center for the Arts, 2025, 2025.125

Will Wilson (Diné/Navajo, born 1969), *Madrienne Salgado (Jingle Dress Dancer/Government and Public Relations Manager for the Muckleshoot Indian Tribe, Citizen of the Muckleshoot Nation)*. 2017, archival pigment print from wet plate collodion scan. 15 x 11 in. (38.1 x 27.9 cm). Gift of Ralph T. Coe Center for the Arts, 2025, 2025.126

Quintin Quam (Zuni, born 1962), *Necklace with Blue Jay*. Late 20th century, silver, inlaid turquoise, coral, white shell. 17 x 2 1/2 x 2 1/2 in. (43.2 x 6.4 x 6.4 cm). Gift of Ralph T. Coe Center for the Arts, 2025, 2025.127

Ancestral Aztec, *Snake Vessel*. 900-1519 CE, bronze. 1 1/4 x 2 in. (3.2 x 5.1 cm). Gift of Ralph T. Coe Center for the Arts, 2025, 2025.128

Dan, *Spirit Mask*. 19th century, wood and pigment. 9 1/4 in. (23.5 cm). Purchased with funds from the Florence Scott Libbey Bequest in Memory of her Father, Maurice A. Scott, 2025.129

Bill Viola (American, 1951-2024), *Dolorosa*. 2000, color video diptych on two freestanding vertical LCD flat panels framed and hinged together. Panels: 16 x 24 1/2 x 5 3/4 in. (40.64 x 62.23 x 14.61 cm). Gift of Zöe and Joel Dictrow, 2025.130

Joy Labinjo (Nigerian, born 1994), *Aunt Bukky*. 2023, oil on canvas. 31 1/2 x 23 5/8 in. (80 x 60 cm). Purchased with funds from the Libbey Endowment, Gift of Edward Drummond Libbey, 2025.131

Italian, *A Crusader Icon with two martyrs of Sebaste—Eugenios and Auxentios*. About 1260-1291, tempera and oil on walnut panel. 18 7/8 x 14 3/4 x 1 3/16 in. (48 x 37.5 x 3 cm). Given in honor of Bishop Daniel E. Thomas, and Purchased with funds from the Libbey Endowment, Gift of Edward Drummond Libbey, by exchange, 2025.132

Maria Katharina Prestel (German, 1747-1794), *Truth Triumphs Over Envy*. 1781, etching and aquatint. 11 7/8 x 9 in. (30.1 x 22.9 cm). Mrs. George W. Stevens Fund, 2025.133

Anna Waser (Swiss, 1678-1714), *Self-Portrait as Flora*. 1704, silverpoint on vellum. 6 x 4 1/4 in. (15.3 x 10.8 cm), Mrs. George W. Stevens Fund, 2025.134.

Seydou Keita (Malian, 1921-2001), *Sans titre [Untitled]*. About 1956-1959 (printed 2016), posthumous black and white silver print on 280g cartoline paper mounted on 1mm aluminium. 63 3/4 x 48 1/16 in. (162 x 122 cm). Mrs. George W. Stevens Fund, 2025.135

Korean, *Jar with Orchid Plants Design*, Joseon Dynasty (1392-1910). 17th century, porcelain with underglaze. 12 x 13 x 6 in. (30.5 x 33 x 15.2 cm). Purchased with funds from the Libbey Endowment, Gift of Edward Drummond Libbey, by exchange, 2025.136

Etsuko Ichikawa (Japanese, born 1963), *Trace 7414*. 2014, glass pyrograph on paper. 92 x 52 in. (233.7 x 132.1 cm). Mrs. George W. Stevens Fund, 2025.137

Terran Last Gun (Piikani, American, born 1989), *There is Order and Balance in Creating the Unseen*. 2024, ink and colored pencil on antique ledger paper. 43 x 40 x 1 1/2 in. (109.2 x 101.6 x 3.8 cm). Mrs. George W. Stevens Fund, 2025.138

Park SeoBo (Korean, 1931-2023), *Écriture No. 16-76*. 1976, pencil and oil on canvas. 51 3/4 x 63 7/16 in. (131.5 x 161.2 cm). Gift of The Georgia Welles Apollo Society, 2025.139

Mi'kmaq, *Quilled chair back in frame*. Mid to late 19th century, birchbark, porcupine quills, natural dyes. 15 x 12 in. (38.1 x 30.5 cm). Gift of James E. Laramy, 2025.140

Mi'kmaq, *Quilled oval box with star pattern on top and dark/light alternating pattern on sides*. Mid to late 19th century, birchbark, porcupine quills, spruce root, natural dyes. 6 3/8 x 9 3/8 x 6 3/8 in. (16.2 x 23.8 x 16.2 cm). Gift of James E. Laramy, 2025.141A-B

Mi'kmaq, *Birchbark Quilled Purse*. Mid to late 19th century, birchbark, porcupine quills, natural dyes. 6 1/2 x 7 1/2 x 3 1/4 in. (16.5 x 19.1 x 8.3 cm). Gift of James E. Laramy, 2025.142

Mi'kmaq, *Heartshaped quilled birchbark box*. Mid to late 19th century, birchbark, porcupine quills, spruce root, natural dyes. 3 1/4 x 5 1/2 x 5 3/4 in. (8.3 x 14 x 14.6 cm). Gift of James E. Laramy, 2025.143A-B

Mi'kmaq, *Quilled birchbark model canoe*. Mid to late 19th century, birchbark, porcupine quills, natural dyes. 2 x 3 x 18 in. (5.1 x 7.6 x 45.7 cm). Gift of James E. Laramy, 2025.144

Mi'kmaq, *Circular birchbark quilled box with nested interior boxes*. Mid to late 19th century, birchbark, porcupine quills, spruce root, natural dyes. 4 3/4 x 12 in. (12.1 x 30.5 cm). Gift of James E. Laramy, 2025.145



Roman, *Statuette of Asclepius Holding an Egg*. Late 2nd century AD, marble. 19
3/4 x 7 7/8 x 3 15/16 in. (50.2 x 20 x 10 cm). Museum Art Fund and Purchased with
funds from the Libbey Endowment, Gift of Edward Drummond Libbey, 2025.16

Donors

With deep gratitude, we thank our generous donors for their commitment and contributions to integrating art into the lives of people.

1901 Society

\$50,000+

The Andersons, Inc.
Anonymous
Mrs. Patricia Appold
Area Office on Aging
The Arts Commission, City of Toledo and
Lucas County
Jennifer and Mark Bevington
Mr. and Mrs. Patrick E. Bowe
Dr. and Mrs. Thomas E. Brady, Jr.
Mr. and Mrs. William J. Carroll
Mrs. Leslie A. Chapman
Joseph V. and Judith M. Conda
Dana Incorporated
Mrs. Sara Jane and Dr. William DeHoff
Colleen and Peter Demczuk
Mrs. Marja Dooner
Mrs. Margaret Eldred
Craig D. Findley
Mr. and Mrs. Trevor S. Foster
Mr. and Mrs. Marvin J. Herb
Mrs. Katherine Jones
Mr. and Mrs. Craig Joseph
KAY Jewelers
Landman-Goldman Foundation
Lehmann Maupin Gallery
Mrs. Kathleen Magliochetti
Micky Malka and Becky Kleiner
Michael and Susie McLoughlin
Mr. Donald F. Melhorn, Jr.
E. A. Michelson Philanthropy
National Endowment for the Humanities
Ohio Arts Council
Ohio Facilities Construction Commission
Owens Corning
Todd and Jeannie Peters
Rita Barbour Kern Foundation
Suzanne and Rodney Rupp
Mr. and Mrs. James J. Secor, III
Mrs. Brooke Simonds
Susan F. and Thomas W. Palmer
Taylor Automotive Family
Mr. Stephen D. Taylor, Sr.
Mr. Mike Thaman
H. L. Thompson, Jr. Family Fund
Toledo Museum of Art Ambassadors
Mrs. Margy Trumbull
Vortex Foundation
Walter E. Terhune Memorial Fund
Mr. James F. White, Jr.
WWMR Foundation
Zenith Foundation

Founder's Circle

\$25,000-\$49,999

Mr. and Mrs. Frederick Amrine
Zar and Caroline Amrolia
Mr. and Mrs. Robert M. Anspach
Associated General Contractors
Julia Tobias-Bearss and John Bearss
Cenovus
Susan L. Conda
William S. Cosgrove and
Kimberlee A. Collins
Dr. Gregor K. Emmert, Sr. and
Mrs. Helen H. Emmert
Justin Gilanyi
Benjamin Gross
Huntington Bank
Mr. and Mrs. Zac Isaac
Mr. and Mrs. Dennis G. Johnson
William and Cassandra Kaplin
Mr. Christian Keesee
KeyBank Foundation
Mr. Jeff and Dr. Inge Klopping
Samuel H. Kress Foundation
Bob McCarthy
Victoria Miro Gallery
Nationwide Children's Hospital
Mr. H. Zachary Ottenstein
Owens-Illinois Inc.
James Telfer and Nicole Diller
Mrs. Cynthia B. Thompson and
Mr. Ronald Thompson
Alexa Waley-Cohen
Mr. and Mrs. David K. Welles Jr.

Georgia Welles Apollo Society

Zar and Caroline Amrolia
Mrs. Frances H. Anderson
Mr. and Mrs. Michael J. Anderson
Mr. and Mrs. Robert M. Anspach
Mrs. Patricia Appold
Mr. and Mrs. Richard L. Arnos
Julia Tobias-Bearss and John Bearss
Cynthia Beekley
Boeschstein Family Foundation
Mr. and Mrs. Patrick E. Bowe
Dr. and Mrs. Thomas E. Brady, Jr.
Ms. Elaine Canning and Dr. Daniel Kory
Mr. and Mrs. William J. Carroll
Mrs. Leslie A. Chapman
Mr. and Mrs. Anthony R. Clark
Mr. and Mrs. Michael Cline
Joseph V. and Judith M. Conda
Susan L. Conda
William S. Cosgrove and Kimberlee A. Collins
Mrs. Dora E. Crowther
Bill and Pam Davis
Mrs. Sara Jane and Dr. William DeHoff
Mr. and Mrs. Anthony Deiger
Mr. and Mrs. Peter Demczuk
Mr. and Mrs. Gregory B. Denny
Mr. and Mrs. Thomas B. Donnell
Mrs. Marja Dooner
Dr. Gregor K. Emmert, Sr. and
Mrs. Helen H. Emmert
Ernest and Carolina Enrique
Judith Enstone and David Enstone
Mr. and Mrs. William Fall
Mr. and Mrs. John Fedderke
Mr. and Mrs. James B. Foote
Dr. and Mrs. James D. Geiger
Mr. and Mrs. Terrance G. Gerken
Justin Gilanyi
Dr. and Mrs. Joel Gorski
Mr. and Mrs. Porter W. Gregory, III
Benjamin Gross
Mrs. Ann W. Hartmann
Mr. and Mrs. Marvin J. Herb
Mr. and Mrs. Taber H. Hinkle
Mr. and Mrs. James A. Hoffman
Ms. Jeannie Hylant and Mr. Thomas McHugh
Michael and Tina Hylant
Mr. and Mrs. Richard C. Hylant
Ms. Sandra M. Hylant
Mr. and Mrs. Zac Isaac
Mr. and Mrs. Tom Isley
Mrs. Katherine Jones
Mr. and Mrs. Craig Joseph
Mr. and Mrs. Thomas Kabat
Dean Kasperzak and Patrice Spitzer

Mr. and Mrs. Douglas E. Kearns
Mr. Christian Keesee
Mr. Brian Kennedy
Eileen Kennedy and Robert Heim
Ms. Mary Kennedy and Mr. Andrew Lyle
Mr. Jeff and Dr. Inge Klopping
Mrs. Mary Knake
Mr. and Mrs. Harley J. Kripke
Mr. and Mrs. Mark H. Kruse
Mrs. Patricia D. Levey
Kenneth and Jean Lovejoy
Mrs. Mary Lyden
Mrs. Kathleen Magliochetti
James Maltz
Ms. Rita Mansour
Kenneth Martin and Marja Lasek-Martin
Bob McCarthy
Michael and Susie McLoughlin
Mr. and Mrs. Philip McWeeny
Mrs. Karen J. Merrels
Mrs. Mary Smith Merrick
Ms. Holly Metzger and Mr. John Coonradt
Sharmon and John Minns
James C. Moore and Tim R. Valko
Mr. and Mrs. Robert J. Moran
Dr. and Mrs. Michael Moront
Mr. and Mrs. Larry Nichols
Mr. and Mrs. Randy Oostra
Jonathan F. Orser* and Deborah Born
Susan F. and Thomas W. Palmer
Meredith M. Prime
Dr. and Mrs. James G. Ravin
Mr. Robert F. Reichert
Mr. and Mrs. William D. Rudolph
Suzanne and Rodney Rupp
Mr. and Mrs. Robert C. Savage
Mr. and Mrs. James J. Secor, III
Mrs. Brooke Simonds
Mrs. Nancy L. Smythe
Mrs. Diane Snyder
Dr. and Mrs. Lawrence Spetka
Ms. Sharon Speyer and Mr. Dean Monske
Mr. John S. Stanley
Mr. and Mrs. Spencer D. Stone, Jr.
Mrs. Robin Stranahan
Mr. and Mrs. John S. Szuch
Mr. Stephen D. Taylor, Sr.
Mr. Mike Thaman
Mrs. Cynthia B. Thompson and
Mr. Ronald Thompson
Mrs. Margy Trumbull
Alexa Waley-Cohen
Dr. F. Michael Walsh and Mary Jane Walsh
Mr. and Mrs. David K. Welles Jr.
Mr. James F. White, Jr.
Sydney Williams and Kenny Birch
Dr. and Mrs. Richard J. Wiseley
Mr. Mark Zyndorf





Director's Circle

Platinum | \$10,000

Mrs. Frances H. Anderson
Mr. and Mrs. Robert M. Anspach
Mr. and Mrs. Richard L. Arnos
Boeschstein Family Foundation
Mr. and Mrs. Brian Chambers
Joseph V. and Judith M. Conda
William S. Cosgrove and Kimberlee A. Collins
Bill and Pamela Davis
Gregory and Susan Denny
Mrs. Margaret Eldred
Mrs. Ann W. Hartmann
Dr. David Kouba
Bryan and Teresa Lipinski
Mrs. Kathleen Magliochetti
Mr. and Mrs. Phillip Mintun
Meredith M. Prime
Richard and Gloria Reynolds
Mr. and Mrs. Robert C. Savage
Mr. and Mrs. James J. Secor, III
Mr. and Mrs. Michael R. Wilcox

Diamond | \$5,000

Mrs. Jean E. Allen
Mr. and Mrs. Michael J. Anderson
Mrs. Karen Baither
Mr. and Mrs. Michael P. Bauer
Julia Tobias-Bearss and John Bearss
Cynthia Beekley
Gill W. Bentley
Mr. and Mrs.* David A. Bryan
Anthony and Gay Deiger
Mr. and Mrs. Thomas B. Donnell
Ernest C. Enrique and Carolina Enrique
Mr. and Mrs. James B. Foote
Mrs. Dianne Klein
Harley and Stacey Kripke
Mr. Edward Lane
Mrs. Patricia D. Levey
Mrs. Linda Liber
Mr. and Mrs. Leslie P. Lipski
Jean and Kenneth Lovejoy
Mr. and Mrs. Robert J. Moran
Mr. and Mrs. James A. Hoffman
Nicholas F. and Susan Hartman Muska
Mr. Sam L. Rice, III
Mr. Marvin A. and Dr. Nancy C. Robon
Mrs. Priscilla Lamb Schwier
Dr. and Mrs. R. Jeffery Stephens
Mr. and Mrs. Spencer* D. Stone
Mr. and Mrs. John S. Szuch
Michael Tamor and Helen Michaels
Mr. and Mrs. Mark D. Wagoner, Jr.
Mr. and Mrs. Richard Walinski
Mr. Wayne J. Zitkus

Crystal | \$2,500

Dr. and Mrs. Celso Antiporda
John and Lynn Bachelor
Ms. Linda Beall
Archie and Cheryl Call
Sandra Drabik Collins
Brent and Pamela Cousino
Mr. and Mrs. Mark Dangler
James DeVilbiss
Dr. Gregor K. Emmert, Sr. and
Mrs. Helen H. Emmert
Mr. and Mrs. Joel P. Epstein
Annette Fink
Dr. and Mrs. Steven S. Gale
Mathias J. Gaynor II and
Judy L. Stone-Gaynor
Mary Larkin Geosits
Mrs. Joan Haigh*
Shirley W. Hancock
Jake Hirzel
Mr. Paul Holewinski and Mrs. Susan Cole
Mr. and Mrs. John H. Hull
Frank and Lynn Jacobs
Mrs. Billie Johnson
Dr. and Mrs. Robert B. Julius
Mr. and Mrs. Douglas E. Kearns
Mr. Christian Keesee
Ms. Georgeann Kohn
David and Cynthia Krock
Dr. Sandra Laas
Dr. Glenn Lipscomb and Dr. Janet Hartley
Dr. Allen and Hindea Markowicz
Kenneth Martin and Marja Lasek-Martin
Ms. Paula Mayes
Mr. and Mrs. Philip McWeeny
Ms. Jolene Miller and Ms. Donna Steppe
Jay and Gail Mirrow
Dr. and Mrs. R. Daniel Rigal
Beau Rochte
Ms. Janet C. Rogolsky
Bill and Laura Rudolph
Ken and Nancy Rusk
Claire and Fred Schaefer
Cynthia Skaff and Rob Fredrick, MD
Ms. Diana Sluhan
William A. and Carol B. Sluhan
Dr. Courtney Smotherman
Dr. and Mrs. Lawrence Spetka
Mr. and Mrs. Stephen H. Staelin
Mr. and Mrs. David Stafford
William Steel
Mr. Daniel N. Steinberg
Mr. and Mrs. Michael* Stewart
Gloria and Jack Stiles
Mrs. Robin Stranahan
David and Ann Strickler
Mr. Albert A. Vargo, Jr.
Mrs. Valerie Wiley

President's Council

\$1,500

Ms. Leslie Adams
Sharon and Darryl Allen
Charles and Janice Antal
Mr. Gregory Armstrong
The Honorable Vernelis Armstrong
John and Becky Aubry
Kate and Tom Backoff
Marianne Ballas
Dr. and Mrs. Frank Barone
Mr. Eric Beach
Joel S. and Linda K. Beren
Kate Blake
Ms. Donna J. Bogan
Mr. and Mrs. Stephen C. and Marsha Boice
Suzanne Bond
Mr. William Bostleman
Mr. and Mrs. James H. Brennan, Jr.
Doug and Lisa Brown
Mr. and Mrs. Mike Calabrese
Mr. and Mrs. John Calderonello
Ms. Elaine Canning and Dr. Daniel Kory
Peter and Peggy Casey
Christine Castellano
Dr. and Mrs. John T. Chiles
Mr. and Mrs. Anthony R. Clark
Mr. and Mrs. Michael Cline
Mr. and Mrs. Jeffery L. Cohen
Mr. Pariss M. Coleman, II and Dr. Traci Watkins
Susan L. Conda
Mr. and Mrs. Nick Conrad
Mrs. Susan Croci
Mrs. Dora E. Crowther
Dr. Carlos A. de Carvalho and
Ms. Carol Greenberg

Mrs. Jessalyn W. Dattilo
Dr. and Mrs. Paul V. Daverio
Mr. and Mrs. Bruce A. DeBoer
Mr. and Mrs. Gary Delman
Mr. Michael M. Dorn
Joan Duggan and Wally Stotz
Mr. and Mrs. Nicholas M. Dye
Ms. Cassandra Edwards and
Mr. Steve Webber
Lars Eller
Joseph Emens and Mary Triplett
Ms. Elizabeth A. Emmert and
Mr. John S. Henzler
Ms. Carol Ann Fadell
Mr. and Mrs. William Fall
Dr. and Mrs. Stephen J. Farber
Mr. and Mrs. John Fedderke
Mr. Gregory Fess
Ann and Charles Filipiak
Catherine and Benjamin French
John Friedlander and Pamela Moss
Mr. and Mrs. Kevin Friedman
Janice and Thomas Gagnet
Rev. Robert E. Gahler and J. Michael Hull
Dr. and Mrs. Steven S. Gale
Mary E. Galvin
Mrs. Brenda Geiger
Dr. and Mrs. James D. Geiger
Mr. and Mrs. Terrance G. Gerken
Rose and Greg Geswein
John* and Bette Gilwee
Paul Goldner and Sandy Soifer
Dr. Mary J. Gombash and Mr. Bud Crosby
Maideh and Paul Gore
Dr. and Mrs. Joel Gorski
Mr. and Mrs. Porter W. Gregory, III
Mr. and Mrs. Douglas G. Haag
Mr. and Mrs. John R. Hadley

Mrs. Claudia M. Handwork
Mr. and Mrs. Gene M. Hardy
Sarah Hickernell and Sally Herbert
Mrs. Mary Dell Hibbert*
Mr. and Mrs. Kenneth E. Hileman
Mr. and Mrs. Taber H. Hinkle
Karen and Gary Hinkson
Edward L. Hoffman
Ms. Bette E. Hudnutt
Mr. and Mrs. Tom Isley
Mr. and Mrs. Marvin K. Jacobs
Joseph C. Jarvis and Michael Craig
Mr. and Mrs. Craig Joseph
Mr. and Mrs. Thomas Kabat
Mary M. Karazim
Dean Kasperzak and Patrice Spitzer
The Honorable and Mrs. Reeve W. Kelsey
Patrick and Maureen Kenney
Brian P. and Mary Kennedy
Eileen Kennedy and Robert Heim
Ms. Mary Kennedy and Mr. Andrew Lyle
Dr. and Mrs. Allan B. Kirsner
Mr. and Mrs. Frank P. Kistler, Jr.
Mrs. Karen Klein
Mary Ann and Jim Kline
Dr. Peter Klein and Mrs. Julie Klein
Mrs. Mary Knake
Mr. and Mrs. Milton F. Knight
Mr. and Mrs. Zale Kohler
Lee and Bradford Koles
Mr. and Mrs. Michael S. Koralewski
Mr. and Mrs. Mark Kruse
Mrs. Francine Lawrence
Nancy and James Lapp
Carolyn and Gerald Lemieux
Mr. and Mrs. Joel A. Levine
John and Peggy Lewis
Jennifer and Rick Logan



John H. Luscombe and Carol Imes-Luscombe
Mrs. Mary Lyden
Marsha A. Manahan and Thomas P. Killam
Mr. and Mrs. Thomas J. Manahan, Jr.
Dr. and Mrs. Arthur Mancini
Mr. and Mrs. Gus Mancy
Mr. David Manning
Dr. Maurice Manning and Mrs. Carmel Manning
Ms. Rita Mansour
Mr. Thomas Marino
Susan Martin and Jude Aubry
Despi Mayes and James Winans
Mr. and Mrs. William McDonnell
Lisa McDuffie
Colleen McGoldrick
Sarah McHugh
Mrs. Karen J. Merrels
Ms. Holly Metzger and Mr. John Coonradt
Ms. Nancy A. Miller and Mr. Michael Mikkonen
Mrs. Elizabeth Boren Millhon
Sharmon and John E. Minns II
Mr. and Mrs. Stephen R. Mitchell
Mrs. Marsha C. Molnar
Dr. and Mrs. John F. Monoky, Jr.
Ms. Susan E. Morgan
Dr. and Mrs. Michael Moront
Geraldine M. Mowery
Dr. and Mrs. Richard Munk
Catherine Noble
David and Katherine O'Connell
Joseph T. and Ann P. O'Leary
Jonathan F. Orser*and Deborah Born
Ms. Patricia O'Toole
Mr. Walter R. Palicki
Diane and Jerome Phillips
Ms. Mary Ellen Pisanelli
Mr. and Mrs. Thomas G. Pletz
Dr. Susan A. Pohlod

Douglas and Cinda Pontsler
Erin Pope
Carolyn and Richard Putney
Nancy E. Quandt
Ms. Barbara Quilty
Dr. Nurjehan Quraishy
Terri and Jack Radke
Mrs. Kiran Rai
Dr. and Mrs. Suresh Ramnath
Steven Andrew Rank
Dr. and Mrs. James G. Ravin
Mrs. Susan Reams
Stephanie Johnstone and Kent Reecer
Mr. Robert F. Reichert
Mr. and Mrs. Harlan Reichle
Dr. and Mrs. Christopher Riordan
David and Leslie Risley
Ms. Gretchen Rohm and Mr. David Ensing
Mr. and Mrs. Jack Romanoff, III
Suzanne and J.B. Rorick
Mr. and Mrs. Paul H. Rothschild
Mr. and Mrs. Stephen A. Rothschild
Dr. and Mrs. Allan Rubin
Mrs. Arlene T. Rubinoff
Mr. and Mrs. Richard P. Sabin, Jr.
Dr. and Mrs. Stephen R. Saddemi
Ruth Ann Sailstad
Ms. Ann Sanford
John and Roxann Satkowski
Linda and Loren Sattler
Drs. Stanley and Dorothea Sawicki
Mrs. Barbara R. Schlatter
Mrs. Angelike Schreder
Mr. Robert R. Seeman and
Ms. Karin A. Jacobson
Ms. Carol Semersky
Mr. and Mrs. Norman Shapiro
Mr. and Mrs. Charlie Sheets

Mrs. Kay Silk
David and Kathy Simko
Mrs. Brooke Simonds
Mr. Ed Simon and Mrs. Tima Simon
Connie Barron-Smith and Art Smith
Mrs. Mary Smith Merrick
Mrs. Nancy L. Smythe
Mrs. Diane Snyder
Dr. and Mrs. Thomas C. Sodeman
Mr. John S. Stanley
Mrs. Claudia Stein
Mrs. Barbara Stewart
Mr. and Mrs. Spencer D. Stone, Jr.
Mr. and Mrs. John L. Straub
Mrs. Olivia Summons
Ms. Linda Tallman
Mr. Charles Alter and Ms. Terry Teufel
Dr. and Mrs. Warren S. Tipton
Dr. and Mrs. James A. Tita
Mr. and Mrs. Frederick J. Treuhaff
Mr. and Mrs. Lance L. Tyo
Mr. and Mrs. Timothy E. Walsh
Dr. F. Michael and Mary Jane Walsh
Mike and Terri Ward
Mr. and Mrs. David F. Waterman
Stephen and Karen Weidner
Mrs. Mary Weiss
Mrs. Polly White
Marc and Carol Williams-Young
Peter J. and Kathy Wilson
Patrick and Ellen Wise
Dr. and Mrs. Richard J. Wiseley
Terry and Tom Wolfe
Donna Woodson, MD
Mr. Robert L. Zollweg
Mr. Mark Zyndorf



Supporting

\$600-\$1,499

Lisa and Dave Alleman
Anonymous
Ms. Kay L. Baker
Jeffrey Barefoot
Sally L. Binard
Mr. William K. Block, Jr.
Konni Bostleman
David Brown and Dianne Austin
Mr. and Mrs. Frederick Byers
Jo Ann Calzonetti
Drs. Earl and Thurid* Campbell
Mr. William J. Carpenter
Ms. Lora Christie-Barton
Catherine and Stephen Clark
Mrs. Lorraine Coe
Mr. and Mrs. Richard L. Cromer
Mr. and Mrs. W. Jarman Davis, III
Dr. Richard H. Deerhake
Mr. Jimmie G. Edwards
Sandra J. Fabel
Mr. and Mrs. Richard R. Faist
Mr. Blake Fillion
Laurie French
Mr. and Mrs. Michael Galbraith
Traci and Robert Glick
Judy Gorun
Mr. Robert A. Haaf
Mr. Donald Harbaugh
Mel Harbaugh
Matthew and April Hays
Mrs. Helene Helburn
Mrs. and Mr. Jacki and Jay Herrington
Mr. and Mrs. William H. Heywood, III
Dr. and Mrs. William L. Horvath
Mr. and Mrs. David G. Huey
Dr. S. Amjad Hussain
Shelli Jacobs and Tom Waniewski
Mr. John L. Jacobson and
Ms. Carol J. Hargreaves
John Jones and Tammyan Starr
Chris and Regina Joseph
Mr. and Mrs. Aaron Kahn
Phillip and Jennifer Kajca
Rev. Kent Kaufman
Leo and Sharon Knox
Mr. Keith Knueven and Chalmer Pivik
Mrs. Joan Kripke
Thomas* and Mary Kunz
Mr. and Mrs. Ron Lang
Mary Lannin
Mr. and Mrs. Paul F. Leininger
Daniel and Sophia Lumbrezer
Shwu and Arthur Mabrey
Donald MacLean and
Wendy Gibson-MacLean
Gerald and Marcene Marsa
Mrs. Susan Matz and
Mr. Stephen Cherrington
Kenneth and Patricia Mauer
David and Sara Jamieson
Mr. Jim Medill and Lynn Jones
Mr. Roger Muenger
Kay Murray
Mrs. Joan L. O'Connell
Jon and Helen Patton

Mr. Donald G. Pennell
Dr. James Piper
Ms. Melinda Price
Mr. and Mrs. Mario Procaccini
Ms. Brenda A. Ray
Kathleen Ray and Christopher Peatee
Dr. Katerina Ruedi Ray and Dr. Roger Ray
Dr. Erin Rinto
James C. Roberts and
Nancie Entenmann Roberts
Mr. and Mrs. Les A. Robertson
Mr. and Mrs. Mark S. Rubini
Ms. Susan Santoro
Joseph and Chrisann Sferra
Jason and Danielle Schroeder
Dr. and Mrs. John L. Schwartz
The Searles Family Foundation
Judi and Philip Selden
Lisa and Judd Silverman
April and Brian Smucker
Dr. Bethanne Snodgrass
Keith B. Sparrow and Suzanne L. Smitley
Mr. Ryan A. Spath
J. Scott and Rita Stewart
Mr. and Mrs. Charles A. Stocking
Benjamin and Michelle Sweetser
Guy and Joan Szuberla
Dianne and Robert Tankoos
Mary Ellen Taylor and James LeSage
Peter and Cynthia Taylor
Stephen and Julie Thomas
Teri and Philip Thomas
Thomas and Patricia Tuschman
Susan and Roger Waller
S.E. Weaver and John Schniker
Mrs. J. Blair Webster
Richard and Christine* Weisfelder
Mrs. Jacqueline Rousseau Werner
Mr. and Mrs. Martin D. Werner
H. David White and Hilary Bell White
Mr. and Mrs. Dwight D. Wittenberg
Irma L. and Edwin A. Wolf, Jr.
Billy and Tenley Yark
Mr. and Mrs. Joseph L. Young

Business Council

Corporate

Focus CFO
KeyBank Foundation

Leadership

American Frame Corporation
Associated General Contractors
The Andersons, Inc.
Buckeye Broadband
Creative Financial Partners
Dana Incorporated
Gilbane Building Company
Kripke Enterprises Inc.
The Laibe Electric Company
Medical Mutual
Nationwide Children's Hospital
Owens Corning
Turner Construction
Wurtec

Executive

Asset Protection Corporation
Estate Jewelers of Toledo Inc
La-Z-Boy
Mosser Construction Inc.
The Optical Shop
Pilkington North America
Program Solutions Group, LLC
RBC Wealth Management/TWDS group
Rudolph Libbe Group
Spartan Chemical Company Inc.
Trust Company Family Offices
Walker Funeral Home

Associate

Area Office on Aging
Bartz Viviano Flowers & Gifts, Inc.
The Collaborative Inc.
Dunbar Mechanical Inc.
Eastman & Smith Ltd.
Gross Electric Inc.
Hafner Florist
Hart
Huntington Bank
Jones & Henry Engineers Ltd.
Kingston HealthCare Company
Marshall & Melhorn
Munger Munger & Associates Architects Inc.
n3ed.com LLC
Oswald Companies
Patton Wealth Management
Perry Prosthetics, Inc.
Romanoff Electric Corporation
Safeguard Security Service Inc.
Savage & Associates Inc.
Signature Bank
SSOE Inc.
Toledo Building Services
Toledo Chapter of The Links Incorporated
Waterford Bank N.A.



Grants, Foundations, Sponsorships & Gifts

\$100,000+

Anonymous
Mrs. Patricia Appold
Mr. and Mrs. Patrick E. Bowe
Dr. and Mrs. Thomas E. Brady, Jr.
The Estate of Marcia Buss
Mrs. Leslie A. Chapman
Joseph V. and Judith M. Conda
Mrs. Marja Dooner
Craig D. Findley
Mrs. Katherine Jones
KAY Jewelers
Mrs. Kathleen Magliochetti
Michael and Susie McLoughlin
National Endowment for the Humanities
Nettie Poe Ketcham Trust
Ohio Arts Council
Ohio Facilities Construction Commission
Owens Corning
Susan F. and Thomas W. Palmer
Rita Barbour Kern Foundation
Felix F. Sampayo Trust
The Estate of Eleanor Sonntag
Sotheby's
Mr. Mike Thaman
H. L. Thompson, Jr. Family Fund
Taylor Automotive Family
Mr. Stephen D. Taylor, Sr.

\$50,000-\$99,999

The Andersons, Inc.
Area Office on Aging
The Arts Commission, City of
Toledo and Lucas County
Jennifer and Mark Bevington
Dana Incorporated
Mrs. Sara Jane and Dr. William DeHoff
E. A. Michelson Philanthropy
Mrs. Margaret Eldred
Mr. and Mrs. Trevor S. Foster
Landman-Goldman Foundation
Mr. and Mrs. Craig Joseph
Micky Malka and Becky Kleiner
Lehmann Maupin Gallery
Mr. Donald F. Melhorn, Jr.
Todd and Jeannie Peters
Mr. and Mrs. George W. Ritter Trust
Suzanne and Rodney Rupp
Mr. and Mrs. James J. Secor, III
Mrs. Brooke Simonds
Walter E. Terhune Memorial Fund
Toledo Museum of Art Ambassadors
Vortex Foundation
Mr. James F. White, Jr.
WWMR Foundation
Zenith Foundation

\$25,000-\$49,999

Mr. and Mrs. Frederick Amrine
Associated General Contractors
Julia Tobias-Bearss and John Bearss
Cenovus
William S. Cosgrove and Kimberlee A. Collins
The Estate of Edwin F. Durivage
Dr. Gregor K. Emmert, Sr. and
Mrs. Helen H. Emmert
Huntington Bank
Mr. and Mrs. Zac Isaac
Mr. and Mrs. Dennis G. Johnson
Mr. and Mrs. William Kaplin
Mr. Christian Keesee
KeyBank Foundation
Mr. Jeff and Dr. Inge Klopping
Samuel H. Kress Foundation
Victoria Miro Gallery
Nationwide Children's Hospital
Mr. H. Zachary Ottenstein
Owens-Illinois Inc.
The Estate of Catherine M. Smith
Mrs. Cynthia B. Thompson and
Mr. Ronald Thompson
Mr. and Mrs. David K. Welles Jr.

\$10,000-\$24,999

Mr. and Mrs. Robert M. Anspach
Art Iron Foundation
Mr. and Mrs. Scott Brown
Patricia and Bob Cabanski
Erick Calderon
Walter H. Christen Charitable Trust
Mr. and Mrs. Lawrence T. Foster
Darryl and Jean Fox
Justin Gilanyi
The Estate of Grace Gleason
Greater Toledo Community Foundation
Elizabeth C. Heckert Charitable
Endowment Fund
Mrs. Dianne Klein
The Estate of Kenneth Levin
Mr. and Mrs. Jon M. Levine
Bryan and Teresa Lipinski
Kenneth and Jean Lovejoy
Marble Harbor Investment Council
Marc Marion
Medical Mutual
Cheryl and Richard O'Connor
PNC Foundation
The Estate of Patricia Russell
Mrs. Claire Schaefer
Shumaker Loop & Kendrick LLP
James Telfer and Nicole Diller
Webster Sturdivant Trust

\$5,000-\$9,999

Mrs. Frances H. Anderson
Arts Infrastructure Soul Foundation
Ms. Kay L. Baker

Elsie and Harry Baumker
Charitable Foundation Inc.
Mr. and Mrs. John K. Clement, Jr.
Mr. and Mrs. Gregory B. Denny
Joan Fought
Mr. and Mrs. Douglas E. Kearns
The Estate of Mildred E. Kern
The Estate of Janet A. LeGolvan
Virgina Madrid
Mr. Andrew Neckers
Ms. Pamela S. Neckers
ProMedica
Ms. Janet C. Rogolsky
The Estate of Patricia Russell
S.C. Johnson & Son Inc.
Mrs. Priscilla L. Schwier
Signature Bank
The University of Toledo Foundation
Mr. and Mrs. Tom S. Ziem

\$1,000-\$4,999

Betco Corporation
Martha H. Boice
Rita Jaessing Brauneck
Jo Ann Calzonetti
David T. Camp
Pairlee and James Clarkson
Mr. and Mrs. W. Jarman Davis, III
Miss Annette L. Donar
Mr. and Mrs. William Fall
Dr. Stuart and Susan Farquharson
Robert L. Fondessy Family Fund
Gracefield Foundation
Mr. and Mrs. Porter W. Gregory, III
John and Virginia Hankison Foundation
Dr. Diane Jacobsen
Mr. Richard Kaser
Thomas and Dianne Klein Community Fund
J. Jeffry & Elizabeth S. Louis Foundation
James E. and Wilma Lupe Fund
Guy & Rosa Lee Mabry Foundation
McIntosh Family
Nicholas F. and Susan Hartman Muska
Mrs. Tina Nall
Delos M. and Doris A. Palmer Fund II
Crystal W. Penn
The Pollock-Molchanov Foundation
The Estate of Inga Reynolds
Mr. Robert S. Rudolph
David and Lisa Shall
Frederick B. and Kate L. Shoemaker Trust
Dr. Dione and Mr. Michael Somerville
Mr. and Mrs. Charles A. Stocking
Stratton-Klingler Fund
Toledo Refining Company
Mrs. Kiron and Pratap Torsekar
The Frederick S. Upton Foundation
Amanda and Frank Viviano
Dr. Catherine L. Webb
Steve and Cassandra Webber
Sydney Williams and Kenny Birch
YPO Maumee Valley

Libbey Circle

Mr. Todd M. Ahrens and Mrs. Amy Craft Ahrens
Sharon and Darryl Allen
Ms. Maureen Anderson
Ms. Kay L. Baker
Robert Bell
Mrs. Sally Bergsmark
Rhoda L. and Roger M. Berkowitz
Dr. and Mrs. Lawrence A. Birndorf
Mr. William K. Block, Jr.
Mr. Howard Bond
Mr. Terry L. Bossert
Estate of Gertrude M. Bowe
Estate of Robert E. Brand
Estate of Mrs. Judith Brown
Mr. and Mrs. John H. Burson
Mr. and Mrs. John Calderonello
Estate of Caroline Briggs Jobst
Mrs. Lois Chandler
Dr. and Mrs. John T. Chiles
Mr. Walter A. Churchill, Jr.
Mr. Paul J. Churdar
Mrs. Dorothy H. Coats
Mr. and Mrs. Steven R. Coffin
Joseph V. and Judith M. Conda
Susan L. Conda
Joshua J. Cooper
William S. Cosgrove and Kimberlee A. Collins
Brent and Pamela Cousino
Mrs. Dora E. Crowther
Mr. and Mrs. Paul E. Croy
Dr. Carlos A. de Carvalho and
Ms. Carol Greenberg
Mr. and Mrs. Martin DeBeukelaer
Mrs. Sara Jane and Dr. William DeHoff
Mr. David Donley and Ms. Karen E. Wood
Mrs. Maureen Donnell
Mrs. Marja Dooner
Mr. Byron S. Dunham
Mr. and Mrs. Nicholas M. Dye
Eric Ederer and Kathleen Opperwall
George and Pat Eistetter
Dr. Gregor K. Emmert, Sr. and
Mrs. Helen H. Emmert
Ms. Elizabeth A. Emmert and
Mr. John S. Henzler
Nancie H. Entenmann Roberts and
James C. Roberts*
Estate of Ruth K. Everhard
Chuck and Elizabeth Ference
Emily Finkel
Mr. and Mrs. James B. Foote
Mrs. Josette Freeman
Mr. and Mrs. Lawrence M. Friedman
Mr. and Mrs. James E. Funk, Jr.
Mary E. Galvin
Mrs. Barbara Glowacki
Mr. and Mrs. Douglas G. Haag
Mr. and Mrs. John R. Hadley
Mrs. Joan Haigh*
Sharon Hanna

Mr. James R. and Barbara E. Harris
Mrs. Ann W. Hartmann
Mr. Edward T. Hill
Barbara Sunderman Hoerner
Mr. and Mrs. James A. Hoffman
Edward L. Hoffman
Mrs. Karen Isgrig
Mr. and Mrs. Tom Isley
Frank and Lynn Jacobs
Mr. and Mrs. Dennis G. Johnson
Estate of Joyce E. Smart
Dean Kasperzak and Patrice Spitzer
Mrs. Judith A. Kerl
Mrs. Maureen Kirkby
Mr. Joseph J. Klein
Estate of Florence Kloebe
Matthew and Jill Kripke
Mr. and Mrs. Harley J. Kripke
Floy M. Kroepflin
Mr. and Mrs. Mark H. Kruse
Mr. Gary B. Kuehnle
Prudence Lamb Trust
Kurt Landig
Dr. and Mrs.* Dennis P. LeGolvan
Mr. and Mrs. David R. Lindke
Kenneth and Jean Lovejoy
Mr. Thomas Marino
Ms. Stephanie Mattoni
Mrs. Karen J. Merrels
Florence Metzger and Erin Eaton
Mrs. Patsy Meyers
Estate of Corinne Monto
Mr. and Mrs. Robert J. Moran
Mr. and Mrs. C. Justus Wilcox Trust
Mr. and Mrs. John Newton
Cheryl and Richard O'Connor
Miss Elizabeth Papps
Mr. Donald G. Pennell
Mr. Jack E. Petersen
Ms. Mary Ellen Pisanelli
Meredith M. Prime
Carolyn and Richard Putney
Ms. Shelly Reber
Mr. Robert F. Reichert
Ms. Janet C. Rogolsky
Mr. Walter D. Rosengarten
Mr. and Mrs. Paul H. Rothschild
Adrienne Rudolph
Mr. Gerald-David Runkle*
Mr. Norman L. Sandfield*
Ms. Ann Sanford
Mrs. Dorothy Saxe
Mr. Thomas A. Schmitt
Mrs. Priscilla Lamb Schwier
Mr. George B. Seifried*
Mr. John Shelly
Ms. Patricia Sill
Mrs. Brooke Simonds
Dr. Courtney Smotherman
Estate Mr. Donald L. Solomon
Mrs. Suzanne Speck
Mr. John S. Stanley

Mr. and Mrs. Spencer* D. Stone
Mr. Stephen D. Taylor, Sr.
Mr. Charles Alter and Ms. Terry Teufel
Mr. and Mrs. Thomas P. Verner
Gabrielle Vitellio Southwell and
Bruce Southwell
Rose and Robert Wagner
Richard and Shelley Walinski
Dr. F. Michael Walsh and Mary Jane Walsh
Mr. Prosser M. Watts, Jr.
Mrs. Alice H. Weber
Mr. and Mrs. David K. Welles Jr.
The Estate of Georgia Welles
Lynnette and Dave Werning
Mr. and Mrs. Byron L. West
Patricia and Donald Whitesides
Mrs. Victoria Williamson
Ms. Carol Lynn Wilson*
Mr. Roger E. Wyman
Driek and Michael Zirinsky
Ms. Diane M. Zitzelberger
Mr. Mark Zyndorf

*Deceased

We gratefully acknowledge these donors who passed away before the close of our fiscal year. Their contributions continue to make a difference.



Toledo
Museum
of Art

P.O. Box 1013
Toledo, Ohio USA 43697

Forwarding Service Requested

Non Profit Org.
US Postage
PAID
Toledo, OH
Permit 86

toledomuseum.org
+1 419 255 8000

2025
Annual Report